

# Go Analogue!

i n t h e t h i r d m i l l e n i u m



**Pro-Ject**  
AUDIO SYSTEMS

e d i t i o n 2 0 0 8



Partner factory in Litovel



Sub-platter trimming



CNC manufacturing



Controlling of main bearing and spindle



Adjustment of tone-arm bearings



Mounting of cartridge



Long-term test of each unit



Quality control (technical and acoustic)



Shipping all over the world



Pro-Ject at international exhibitions

## Turntables

### RPM - Line

Pro-Ject RPM 1 .....	9
Pro-Ject RPM 5 .....	8
Pro-Ject RPM 9.1 / 9.1X .....	6
Pro-Ject RPM 6.1 .....	7
Pro-Ject RPM 10 .....	4

### Classic Line

Pro-Ject 1 Xpression III .....	15
Pro-Ject 2 Xperience .....	14
Pro-Ject 6 perspeX .....	12
Pro-Ject Xtension .....	10

### Comfort Line

Pro-Ject 1 Xpression III Comfort .....	15
Pro-Ject 2 Xperience Comfort .....	14

## Debut Line

Pro-Ject Debut III .....	16
Pro-Ject Debut III Esprit .....	17
Pro-Ject Debut III SE .....	19
Pro-Ject Debut III Phono USB .....	18
Pro-Ject Debut III Phono SB .....	18

## Tone-arms

Pro-Ject 9cc .....	23
Pro-Ject 10cc .....	23
Pro-Ject 9 EVO .....	23
Pro-Ject 10 EVO .....	23
Pro-Ject 12 EVO .....	23

## Phono electronic

Pro-Ject Phono Box II .....	20
Pro-Ject Phono Box II USB .....	20

Pro-Ject Phono Box SE II .....	20
Pro-Ject Tube Box II .....	21
Pro-Ject Tube Box SE II .....	21
Pro-Ject Speed Box II .....	22
Pro-Ject Speed Box SE II .....	22

## Accessories

GROUND IT DELUXE 1 .....	24
GROUND IT DELUXE 2 .....	24
WMI 1 .....	24
WMI 2 .....	24
WMI 3 .....	24
PICK IT CARTRIDGE .....	24
MEASURE IT .....	24
COVER IT 1 .....	25
COVER IT 2 .....	25

COVER IT RPM 9 .....	25
ADJUST IT .....	25
ALIGN IT .....	25
GREASE IT .....	25
78RPM PULLEY SET .....	25
STROBE IT .....	25
RECORD PUCK .....	25
LEVEL IT .....	25
BRUSH IT .....	25
ACRYL IT .....	26
GLASS PLATTER .....	26
SANDWICH PLATTER .....	26
RECORD CLAMP .....	26
CORK-MAT .....	26
FELT MAT (VARIOUS COLOURS) .....	26
CONNECT IT .....	26



Pro-Ject Audio Systems is an Austrian company, founded in 1990 in Vienna. The main idea behind this was to produce Hi-fi components with outstanding audiophile sound quality for the lowest possible price.

In the late 1980's Heinz Lichtenegger, the man behind Pro-Ject Audio Systems, noticed that the main brands of the Hi-fi industry did not support the analogue market anymore. Well established European and American companies began to raise prices for their analogue equipment. Because Heinz Lichtenegger believed so strongly in analogue music reproduction, he started Pro-Ject Audio Systems.

On the one hand, the demand for simple but well made turntables at low price levels was still there, because music lovers wanted to enjoy their record collections that were far too valuable to be disposed of.

On the other hand, the culture of hearing vinyl records is a lifestyle in its own right and associated with the longing for a more emotional and better sound quality. Therefore it was only a matter of time before the inevitable return of analogue audio onto the market. So the now legendary first Pro-Ject 1 turntable was developed. This turntable established a new standard of sound reproduction at this price level and was the starting point of a new analogue era.

The most important design principle of Pro-Ject is to get the best sonic performance for the lowest possible price. Classic technologies and high quality materials without luxury elements are combined in a simple but appealing and mechanically correct design. Over the years a wide range of different new models were developed to meet the demand for higher sound quality and special aesthetic requirements.

All Pro-Ject Audio products offer far better sonic performance than you would expect at their price level. Despite the exceptional value for money they guarantee dependable long term performance and are easy to use. Ambitious music lovers will get very accurate and highly emotional sound reproduction using Pro-Ject turntables and accessories for less money than most people would expect. Many international press reviews give convincing documentation about Pro-Ject's high quality standards.

All products from Pro-Ject Audio are consequently manufactured in the European Union. A close teamwork with production lines in the Czech Republic and Slovakia and their authorised specialists makes it possible to produce high quantities according to ISO 9001 standards. Pro-Ject Audio makes a point of producing nearly all of their own critical parts (Motors, Chassis, bearings, tone-arms, etc.) within their own factories. The staff members consist of over 300 skilled personnel. The advantage of "Made in Europe" compared to production in Far-eastern countries is apparent: Reliable communication between European partners, highest quality standards because of trained personnel and short distances for better protection of the environment.

Pro-Ject is an exemplary paradigm of people working in close cooperation within Europe. This achievement was honoured by the EU with the "Econet-Award".

Now Pro-Ject is the worlds foremost producer of analogue turntables with a wide range of products for every standard and budget. Representations in more than 80 countries support customers in all aspects of analogue sound reproduction.

Today analogue audio is still up to date, possibly more than ever. Hearing music from vinyl is 'cool'. Pro-Ject Audio made an essential contribution in the revival of analogue audio.



### RPM 10

**RPM 10 • Manual turntable including 10" Carbon tone-arm.  
A special base, Pro-Ject GROUND IT deluxe1, is also included.**

#### Turntable

- Heavy 5,4 kg acrylic platter with perimeter belt drive and brass record puck
- Magnet supported, inverted main bearing Type Block 1 with ceramic thrust-pad
- Central metal block optimizes centre of gravity
- Metal-granulate filled plinth and equipment base Ground it deluxe 1 for universal damping
- Height adjustable Sorbothane®-damped aluminum cones
- Free standing ultra silent drive motor Type Select 1 housed in separate base
- Gold-plated RCA phono sockets

#### Tone-arm 10cc

- 10" Carbon-Fibre tone-armtube and headshell drawn from one piece
- Conical arm tube avoids standing wave reflections
- Inverted bearing design with four hardened ABEC7 spec ball races
- Solid arm base permits accurate height adjustment of armtube and VTA (vertical tracing angle)
- Single-screw fixing of armtube allows rotation for easy adjustment of needle azimuth despite fixed headshell
- Highly flexible top-grade copper internal wiring
- Silicon damped tone-armlift
- Resonance optimized counterweight construction



## THE ESSENCE OF THE ANALOGUE TURNTABLE

Through intensive listening tests we experienced that different materials transmit their own specific resonating fingerprint to the acoustic result in the playback process. With a specially developed measurement process, all acoustic effects on sound are now totally comprehensible. As a result of higher mass the resonance amplitude turns out to be lower – using combinations of different materials resonances become more diffuse and specific resonances less apparent.

RPM 10 chassis is the result of our research. Chambers filled with sand and metal lead to high mass and dampens all resonances effectively. The platter is also very heavy. The advantage of high mass can result in higher rumble of the main bearing. To avoid the decline of sound, magnets make the platter almost float on the inverted main bearing with its ceramic ball and plate. All other design features are well known from the highly acclaimed RPM 9. Bass dynamics and overall calmness are clear advantages compared to all other turntables of the Pro-Ject family.



## RPM line

### RPM 10



Freestanding motor coupled with high mass



Heavy acrylic platter with magnetring and bronze bushing



Inverted bearing shaft with ceramic ball and magnetrings

## RPM 9.1 • RPM 9.1X

### RPM 9.1 • Manual turntable with 9" carbon tone-arm

#### Turntable

- Heavy 4,25 kg acrylic platter with perimeter belt drive and brass record puck
- Magnet supported, inverted main bearing Type 1 with ceramic thrust-pad
- Central metal block optimizes centre of gravity
- Metal-granulate filled plinth for universal damping
- Height adjustable Sorbothane®-damped aluminum cones
- Free standing ultra silent drive motor Type Select 1 housed in separate base
- Gold-plated RCA phono sockets

#### Tone-arm 9cc

- 9" Carbon-Fibre tone-armtube and headshell drawn from one piece
- Conical arm tube avoids standing wave reflections
- Inverted bearing design with four hardened ABEC7 spec ball races
- Solid arm base permits accurate height adjustment of armtube and VTA (vertical tracing angle)
- Single-screw fixing of armtube allows rotation for easy adjustment of needle azimuth despite fixed headshell
- Highly flexible top-grade copper internal wiring
- Silicon damped tone-armlift
- Resonance optimized counterweight construction

### RPM 9.1 X • Manual turntable with acrylic chassis and 9" carbon tone-arm

Same features like RPM9.1



Main chassis from Acryl instead of MDF

## THE FASCINATION OF HEARING MUSIC FROM VINYL ON ITS HIGHEST LEVEL

The technical experience coming from developing RPM 10 was also helpful to improve the RPM 9: the new RPM 9.1 benefits from high mass and improved resonance behaviour. A centralised metal block gives a defined gravity point and absorbs resonances effectively. The RPM9.1 utilises an over-sized ceramic ball bearing that is both extremely tough and absorbing. A separate standing heavy-weight motor block is completely decoupled from the turntable. The carbon tube of the tone-arm 9cc reduces all vibrations coming from the cartridge directly to the central metal block.



## ELABORATE TURNTABLE TECHNIQUES AND OUTSTANDING DESIGN

With Pro-Ject RPM 6.1 SB the mass principle with its advantages in optimising resonance was established at a remarkable price. A heavy weight platter made from MDF and covered with a vinyl mat is utilized. The design of the chassis is more radical and compacted, compared to RPM5. Ceramic main bearing and acrylic sub-platter add up to a resonance-free combination. Special Sorbothane® feet are used for efficient decoupling of the whole system.



## RPM line

### RPM 6.1 SB

#### Manual turntable with electronic Speed selection

##### Turntable

- Belt drive design with low noise AC motor Type Select 2
- Massive 4.25 kg MDF platter with vinyl playing surface and brass record puck
- Acryl-subplatter
- Inverted main bearing Type 1 with ceramic thrust-pad
- Central metal block optimizes centre of gravity
- Motor decoupled by 4 point suspension to reduce vibration
- Integrated Speed Box allows electronically switchable speed between 33 and 45 Upm
- 78 Upm speed switchable
- Height adjustable Sorbothane®-damped aluminum cones
- Gold-plated RCA phono sockets

##### Tone-arm 9c

- 9" Carbon fibre tone-arm with aluminum headshell
- Conical armtube avoids standing wave reflections
- Inverted bearing design with four hardened ABEC7 spec ballraces
- Solid armbase permits accurate height adjustment of armtube and VTA (vertical tracing angle)
- Single-screw fixing of armtube allows rotation for easy adjustment of needle azimuth despite fixed headshell
- Highly flexible top-grade copper internal wiring
- Silicon damped tone-armlift
- Resonance optimized counterweight construction



Heavy precisions balanced platter

### RPM 5 • Manual turntable with 9" carbon tone-arm

#### Turntable

- Belt drive design with low noise AC motor Type Select 2
- Plinth out of MDF with high gloss anthracite surface
- MDF platter with felt mat, cork mat and record clamp
- Platter bearing Type Block 2: Low-tolerance chrome-plated stainless-steel axle runs on a teflon bearing plate in a sintered bronze bearing housing
- Motor decoupled to reduce vibration
- Central metal block optimises centre of gravity
- Height adjustable rubber-damped aluminum cones
- Gold-plated RCA phono sockets

#### Tone-arm 9c

- 9" carbon fibretone-arm with aluminum headshell
- Conical armtube avoids standing wave reflections
- Inverted tonearm bearing comprises inverted hardened stainless-steel points and sapphire thrust-pads
- Solid armbase permits accurate height adjustment of armtube and VTA (vertical tracing angle)
- Single-screw fixing of armtube allows rotation for easy adjustment of needle azimuth despite fixed headshell
- Highly flexible top-grade copper internal wiring
- Silicone damped tone-armlift
- Resonance optimized counterweight construction



Bearing with heavy metal block  
for center the gravity

### AUDIOPHILE ALL AROUND

The aim to better the hi-fi-classic Pro-Ject-1 is achieved with two different approaches: According to the principle of "less is more" we exchanged the rectangular chassis in favour of a radical "drop-form". In addition, the old resonating main platter was exchanged for MDF which is free of resonance. A metal ring is mounted around the main bearing for optimised conductance of unwanted vibrations. The audible benefits are amazing. The sound is calmer and richer without losing detail.





## INGENIOUS ENTRY TO THE AUDIOPHILE WORLD

Our newest "BEST BUY" Star – radical design with no compromise on sound quality at the lowest price possible. All ingredients, like the shape of the chassis with decoupled motor, inverted main bearing and newly designed tone-arm all add up to a miracle in sound for the price!



## RPM line

### RPM 1 „Genie“

#### Manual turntable with S-shaped 8.6" tone-arm

##### Turntable

- Belt drive design with low noise AC motor Type Select 3
- MDF platter with perimeter belt drive and felt mat
- Inverted main bearing with brass bearing housing and polished stainless steel axle
- Drive motor completely decoupled from the plinth
- Sound optimized shape of the MDF plinth
- Silicone belt
- Nylon feet
- Gold-plated RCA phono sockets

##### Tone-arm 8,6 S

- 8,6" S shape tone-arm
- Tone-arm bearing comprises inverted hardened stainless tips in ball races
- Headshell and S-shaped armtube fashioned from a single piece of aluminum
- Armtube allows adjustment of needle azimuth despite fixed headshell
- Vertical tracing angle adjustable



Inverted bearing and nylon feet

**Turntable**

- Super-heavy 25 kg mass load magnetic floating belt drive design
- Sorbothane® damped ultra precise balanced Sandwich platter out of special alloy combined with Vinyl
- brass record puck
- Ultra low noise motor highest selection
- Magnet supported, inverted main bearing Type Block 1 with ceramic thrust-pad
- Integrated Speed Box SE for super silent motordrive and electronically switchable speed
- Metal-granulate filled plinth for universal damping
- Mass loaded interchangeable armboard
- Height adjustable magnet supported feet for perfect isolation
- Gold-plated RCA phono sockets

**Tonearm 10cc or 12cc Evolution**

- 9" and 12" precision tone-arm with carbon-fibre armtube/headshell
- Generation 2 carbon technology
- Conical armtube avoids standing wave reflections
- Highest selection of components
- Antiresonance heavy mass cardan bearing block
- Inverted bearing design with four hardened ABEC7 spec ballraces
- Solid armbase permits accurate height adjustment of armtube and VTA (vertical tracing angle)
- Single-screw fixing of armtube allows rotation for easy adjustment of needle azimuth despite fixed headshell
- Highly flexible top-grade copper internal wiring
- Silicon damped tone-armlift
- Resonance optimized Sorbothane® enhanced counterweight construction
- Improved antiskating and tone-arm lift mechanics

**LISTEN TO ANALOG**

It is apparent throughout contemporary culture that modern and classical designs are working, more than ever before, in harmony. Countless varying product categories, such as cars, watches and furniture, are all embracing the ever-popular retro trend.

The reasoning behind this love of 'retro' is its inherent mix of classical beauty, combined with absolute mechanical precision, high-quality components, and superior performance.

Pro-ject products gave analog a new life in the nineties; our products have successfully shown that you can listen to music in a better way than with any contemporary digital medium, and it doesn't have to cost the earth.

However, now with the Xtension, we at Pro-Ject aim to bring back a classical analog concept from the eighties, and combine it with our advanced contemporary technologies. After eighteen years of turntable manufacturing for analog lovers on a budget, we're delighted to announce our first deck not subscribed to budgetary limitations; and boy does it deliver.



## Xtension

Already, the critically acclaimed 6 Perspex has proved the fantastic result of using magnets to isolate the subchassis. So consequently, for the Xtension this technology has been re-developed to utilise new magnetic feet, which almost completely decouple the main plinth. Combine this with the weighty 25kg total mass of the turntable, and the listener benefits from minimal base resonance. This is a unique combination of 'mass loaded' and 'floating turntable' design principals.

In keeping with these principles, the platter is metal due to its higher mass than acrylic. However, the old standard adoption of pure metal has been abandoned because of its highly-resonant tendencies. Instead, we've found a perfect alloy which we dampened on the inner side with Sorbothane®. Taking this base, we've glued recycled Vinyl records to the top (which act as a perfect mat) and bake this 'sandwich' before precision balancing it. The final product subsequently benefits from a wonderfully resonance-free, heavy platter.

Another consideration was the amount of energy the tonearm base would have to take from arm and cartridge movement. These energies have to be controlled, as do those from the motor and the bearing (they have to be kept away from the tonearm to avoid interference). Consequently, the tonearm base on the Xtension also benefits from 'high-mass' technologies, and is isolated from the main board by a sheet of Sorbothane®. Importantly though, this board is still able to incorporate the adoption of different tonearms.

As we originally premised with this turntable, to be in keeping with its 'classic' ethos, the Xtension comes with a beautiful dustcover with adjustable hinges, as well as several finish options in a high-gloss lacquer. Ultimately, the Xtension truly delivers a timelessly classic, exclusive analogue experience.

X-tension is available in high gloss lacquer finishes: apple, cherry, piano and olive.



Available in following options:

- Mounted tonearm Pro-Ject 9cc
- Mounted tonearm Pro-Ject 12cc
- Mounted tonearm Pro-Ject 9cc Evolution
- Mounted tonearm Pro-Ject 12cc Evolution
- Mounted tonearm Ortofon AS-212S
- Mounted tonearm Ortofon RS-212D
- Mounted tonearm Ortofon AS-309S
- Mounted tonearm Ortofon RS-309D
- Without tonearm



Built in electronic motor speed control



Heavy special alloy damped platter with vinyl mat

## 6 perspeX

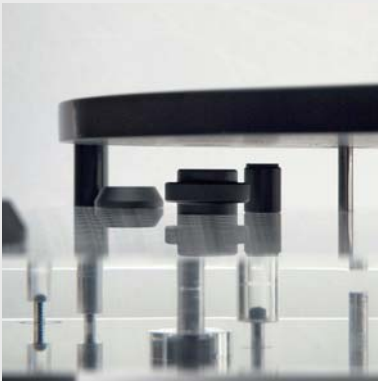
### 6 perspeX • Manual sub chassis turntable with 9" Evolution High-End tone-arm

#### Turntable

- Belt drive design with low noise AC motor Type Select 1
- Unique Magnet supported sub-chassis decouples platter and tone-arm
- 2 kg sandwich MDF platter with perimeter belt drive, vinyl playing surface and record clamp
- Inverted main bearing type Block 1 with ceramic thrust-pad
- Height adjustable Sorbothane®-damped aluminium cones
- Main chassis out of acryl
- Subchassis out of resonance free Corean
- Gold-plated RCA phono sockets

#### Tone-arm 9cc Evolution

- 9" precision tone-arm with carbon-fibre armtube/headshell
- Generation 2 carbon technology
- Conical armtube avoids standing wave reflections
- Highest selection of components
- Antiresonance heavy mass cardan bearing block
- Inverted bearing design with four hardened ABEC7 spec ballraces
- Solid armbase permits accurate height adjustment of armtube and VTA (vertical tracing angle)
- Single-screw fixing of armtube allows rotation for easy adjustment of needle azimuth despite fixed headshell
- Highly flexible top-grade copper internal wiring
- Silicon damped tone-armlift
- Resonance optimized Sorbothane® enhanced counterweight construction
- Improved antiskating and tone-arm lift mechanics



Subchassis with magnets

## THE ULTIMATE SUB-CHASSIS TURNTABLE FOR THE 21st CENTURY!

Listening tests showed that metal springs and sub-chassis limit the sonic possibilities of our sub-chassis turntable classic Perspective.

With the 6 perspeX we cut our own path: The sub-chassis is made out of 'Corean' which shows no resonances at all and this assembly is supported by magnetic power instead of metal springs providing excellent decoupling. The result was phenomenal, so we decided to combine this ultimate turntable design with our new High-End tone-arm Pro-Ject '9cc Evolution'. As a conclusion, the revolutionary decoupling concept and the mechanical tone-arm masterpiece show outstanding abilities in fine dynamics and push the limits of analogue audio one step further.



## PURE ANALOGUE IN SOUND, TECHNOLOGY AND DESIGN

2 Xperience was developed from the now legendary Pro-Ject 2. This balanced and low-resonance design is a perfect combination of sandwich construction, acrylic chassis, MDF platter with vinyl mat and the Pro-Ject 9c top class tone-arm made from carbon fibre with a head-shell made from aluminium. Decoupled motor and conical feet with Sorbothane® inlay are approved Pro-Ject features to eliminate unwanted vibrations.

2 Xperience is also available with wooden chassis in 4 different veneers and piano black finish including electronic speed change and limit stop mechanism.



## CLASSIC line

### 2 Xperience

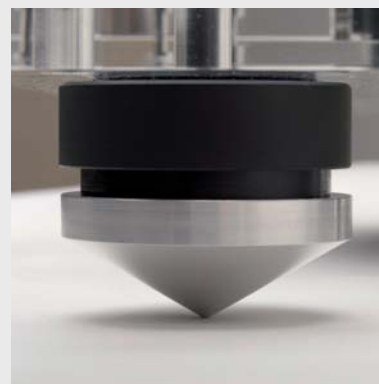
#### Manual turntable with 9" carbon tone-arm

##### Turntable

- Belt drive design with low noise AC motor Type Select 2
- 2 kg sandwich MDF platter with perimeter belt drive, vinyl playing surface and record clamp
- Platter bearing Type Block 2: Low-tolerance chrome-plated stainless-steel axle runs on a Teflon bearing plate in a sintered bronze bearing housing
- Main chassis out of acrylic
- Motor decoupled to reduce vibration
- Height adjustable natural rubber-damped aluminum cones
- Gold-plated RCA phono sockets

##### Tone-arm 9c

- 9" Carbon fibretone-arm with aluminum headshell
- Conical armtube avoids standing wave reflections
- Inverted Tone-arm bearing comprises inverted hardened stainless-steel points and sapphire thrust-pads
- Solid armbase permits accurate height adjustment of armtube and VTA (vertical tracing angle)
- Single-screw fixing of armtube allows rotation for easy adjustment of needle azimuth despite fixed headshell
- Highly flexible top-grade copper internal wiring
- Silicon damped tone-armlift
- Resonance optimized counterweight construction



Height adjustable aluminum Cones damped with rubber

## 2 Xperience Comfort

### 2-Xperience Comfort • Manual turntable with electronic speed change and limit stop

#### Turntable

- Belt drive design with low noise AC motor Type Select 2
- Sandwich – 2 kg MDF platter with perimeter belt drive, vinyl playing surface and record clamp
- Platter bearing Type Block 2: Low-tolerance chrome-plated stainless-steel axle runs on a Teflon bearing plate in a sintered bronze bearing housing
- Main chassis out of Acryl
- Motor decoupled to reduce vibration
- Height adjustable Kautschuk-damped aluminum cones
- Gold-plated RCA phono sockets
- Integrated Speed Box allows electronically switchable speed between 33 and 45 Upm
- Automatic cutoff at the end of the record
- Plinth available in 5 different high gloss finishes cherry, apple, olive, wenge, pianolaquer black

#### Tone-arm 9c

- 9" Carbon fibretone-arm with aluminum headshell
- Conical armtube avoids standing wave reflections
- Inverted tonearm bearing comprises inverted hardened stainless-steel points and sapphire thrust-pads
- Solid armbase permits accurate height adjustment of armtube and VTA (vertical tracing angle)
- Single-screw fixing of armtube allows rotation for easy adjustment of needle azimuth despite fixed headshell
- Highly flexible top-grade copper internal wiring
- Silicon damped tone-armlift
- Resonance optimized counterweight construction



Sandwich platter with glued thick vinyl mat

### EXCEPTIONAL SOUND AND BEAUTIFUL APPEARANCE WITH ALL COMFORT

2-Xperience was developed from the legendary Pro-Ject 2 turntable. A unique combination of a heavy weight chassis and sandwich-platter with a special mat made from vinyl, gives a balanced and resonance-free turntable design. A high-class carbon tonearm 9c with aluminium headshell completes this audiophile design. Like in the 2-Xperience acrylic version, the drive motor is decoupled from the main chassis and special Sorbothane feet give vibration-free support for best sound quality. The Comfort version is equipped with electronic speed change and is available in 4 precious real wood finishes (apple, cherry, olive, wenge) and in high-gloss piano finish.



## AUDIOPHILE AND OPTIONAL IN COMFORT VERSION

1-Xpression III is now the 5th generation of the hi-fi classic Pro-Ject 1 which was presented for the first time 18 years ago. No other entry-level turntable is more audiophile and the current version includes an improved main bearing, acrylic platter, carbon tone-arm with aluminium head-shell and effective decoupling of the drive motor.

As an option the 1-Xpression III is also available in a comfort version including electronic speed change and limit stop.



## CLASSIC line

### 1 Xpression III

### 1 Xpression III Comfort

#### 1-Xpression III Comfort • Manual turntable including carbon tone-arm with or without electronic speed selector and limit stop Turntable

- Belt drive design with low noise AC motor Type Select 2
- Plinth out of MDF with high gloss anthracite surface
- Acrylic 2,2 kg platter
- Platter bearing Type Block 2: Low-tolerance chrome-plated stainless-steel axle runs on a polished ball bearing in a brass bearing housing
- Platter bearing Type Block 2: Low-tolerance chrome-plated stainless-steel axle runs on a Teflon bearing plate in a sintered bronze bearing housing
- Motor decoupled to reduce vibration
- Integrated Speed Box allows electronically switchable speed between 33 and 45 Upm
- Automatic cutoff at the end of the record
- Height adjustable rubber-damped aluminum cones
- Gold-plated RCA phono sockets

#### Tone-arm 8.6c

- 8.6" Carbon fibre tone-arm with aluminum headshell
- Conical armtube avoids standing wave reflections
- Inverted tonearm bearing comprises inverted hardened stainless-steel points and sapphire thrust-pads
- Solid armbase permits accurate height adjustment of armtube and VTA (vertical tracing angle)
- Single-screw fixing of armtube allows rotation for easy adjustment of needle azimuth despite fixed headshell
- Highly flexible top-grade copper internal wiring
- Silicon damped tone-armlift
- Resonance optimized counterweight construction

#### 1 Xpression 3 • Same as above without electronic features



Tone-arm 8.6 C

## Debut III

### Debut III • Manual turntable with 8,6" tone-arm

#### Turntable

- Belt drive design with low noise AC motor Type Select 3
- Plinth out of MDF in matt black or with glossy black, glossy white, silver, red, yellow, blue and green surface
- 1,3 kg balanced steel platter with felt mat
- Bearing Block 3: Low-tolerance chrome-plated stainless-steel axle runs on a polished ball bearing in a brass bearing housing
- Motor decoupled to reduce vibration
- Special, resonance damping feet

#### Tone-arm 8.6 D

- 8.6" tone-arm with aluminum headshell made aout of one piece
- Inverted tonearm bearing comprises inverted hardened stainless-steel points and sapphire thrust-pads
- Single-screw fixing of armtube allows rotation for easy adjustment of needle azimuth despite fixed headshell
- Silicon damped tone-armlift

### HIGH QUALITY ENTRY LEVEL CLASSIC WITH A VERY LOW PRICE

No other analogue hi-fi product was more often honoured to be a real "Best Buy" than the Pro-Ject Debut III. A real bargain with outstanding sound quality!



4 point motor suspensions with precision metal pulley





## ENTRY LEVEL CLASSIC WITH “STUNNING LOOKS” DESIGN

Colourful chassis and acrylic platter match perfectly and make the Debut III Esprit shine brighter than ever. A highly musical lifestyle product!



## DEBUT line

### Debut III Esprit

#### Manual turntable with 8,6" tone-arm

- Same features like Debut III but
- Resonance-free acrylic platter
- High performance cartridge Ortofon Alpha



Resonance free acrylic platter



Ortofon Moving Magnet cartridge

### Debut Phono SB

### Debut Phono USB

**Debut-III / Phono SB • SB Manual turntable with electronic speed change and built-in phono preamplifier**



Integrated Speed Box allows electronically switchable speed between 33 and 45 Upm Plus 78 by changing the belt on the pulley

**Debut-III / Phono USB • Manual turntable with built-in phono preamp and premium A/D conversion and USB output**



A/D converter with USB output

#### Turntable

- Belt drive design with low noise AC motor Type Select 3
- Plinth out of MDF in matt black or silver
- 1,3 kg balanced steel platter with felt mat
- Bearing Block 3: Low-tolerance chrome-plated stainless-steel axle runs on a polished ball bearing in a brass bearing housing
- Motor decoupled to reduce vibration
- Special, resonance damping feet

#### Tone-arm 8.6 D

- 8.6" tonearm with aluminum headshell made aout of one piece
- Inverted tonearm bearing comprises inverted hardened stainless-steel points and sapphire thrust-pads
- Single-screw fixing of armtube allows rotation for easy adjustment of needle azimuth despite fixed headshell
- Silicon damped tonearmlift

### Debut III Phono SB • ENTRY LEVEL CLASSIC WITH ADDITIONAL FEATURES

Debut III Phono SB offers an integrated phono preamp for connecting the turntable directly to a line input. Also included is an electronic speed change. This allows 33 and 45 rpm, but also 78rpm without additional parts.

### Debut III Phono USB • ENTRY LEVEL CLASSIC THAT SUPPORTS AUDIO TRANSFER TO PC/MAC

Debut III Phono USB additionally offers a phono preamp and premium A/D-conversion to digitalise vinyl music for transfer to PC / Mac according USB 1.1.



## AUDIOPHILE EDITION OF THE ENTRY LEVEL CLASSIC

Designed for those who love the musical qualities of Debut III and who want to get better sound quality at a low price. Better platter and isolation feet, higher quality cartridge and gold plated RCA jacks are the clear advantages of this Debut III Super Edition.



## DEBUT line

### Debut III SE

#### Debut III Super Edition • Manual turntable with 8.6" tone-arm

- Same features like Debut III, but:
- 2,2 kg balanced platter
- Bigger diameter of platter
- Height adjustable rubber-damped aluminum cones
- Gold-plated RCA phono sockets
- Higher material selection
- Motortype Select 2
- High performance Ortofon Alpha cartridge

#### Tone-arm 8.6 D

- 8.6" tonearm with aluminum headshell made aout of one piece
- Inverted tonearm bearing comprises inverted hardened stainless-steel points and sapphire thrust-pads
- Single-screw fixing of armtube allows rotation for easy adjustment of needle azimuth despite fixed headshell
- Silicon damped tone-armlift



Gold-plated RCA phono sockets for the optional use of high quality phonocables

## Phono electronic

### Phono Box II

Today, many amplifiers do not have a specific phono cartridge input. Phono Box II is ideal for use with these amplifiers and allows the use of MM and MC cartridges. The output of Phonobox II can easily be connected with a line-input (AUX,...)

#### Phono-Vorverstärker für MM und MC Tonabnehmer

- Preamplifier for MM or MC with switching on the back panel
- low noise ICs

### Phono Box SE II

Phono Box SE II is an even better phono preamp, both on technical and acoustic grounds. It is equipped with a higher grade power supply and offers a wide range of adaptation possibilities. It also has switchable subsonic filter. This unit offers a highly musical performance for MM and MC cartridges.

#### Phono preamplifier (MM and MC)

- Preamplifier for MM or MC with switches on the back panel
- Impedance switch for MC cartridges
- Capacitance switch for MM cartridges
- Double mono architecture
- Ultra low noise ICs
- SMD technology
- DC power possible (for instance with rechargeable batteries)

### Phono Box II USB

Same features as Phonobox II, but offering the additional possibility to transfer analogue audio onto PC/Mac using USB1.1 protocol.

#### Phono preamplifier (MM and MC) with USB-output to record music onto PC

- Preamplifier for MM or MC with switching on the back panel
- low noise ICs
- Analogue-out (RCA) & USB-Digital-out
- Compatible with Windows, Mac OS & Linux





#### Features for all Phonobox products

- Solid and compact casing that protects against vibration and radiation
- Gold-plated RCA connectors
- Black or silver faceplate
- Separate powersupply (included)

## Phono electronic

### Tube Box II

Tube Box II for MM and MC is a very high quality phono cartridge preamplifier. This unit produces a lively and powerful performance with convincing sound staging and emotional presentation.

#### Tube Phono preamplifier (MM and MC)

- Pre-amplifier for MM or MC with switching on the back panel
- Subsonic filter, switchable
- Double mono architecture with 2 double triode tubes for optimum channel separation
- Ultra low noise semiconductors

### Tube Box SE II

Tube Box SE II offers the same characteristics as Tube Box II, but takes the sound to another level. Additional adaptation possibilities and a switchable subsonic filter make it ideal for use with high quality MM and MC cartridges.

#### Tube Phono preamplifier (MM and MC)

- Preamplifier for MM or MC with switches on the back panel
- Impedance switch for MC cartridges
- Capacitance switch for MM cartridges
- Subsonic filter switchable
- Double mono architecture
- Premium tubes ECC-803, Golden Pin
- EAT Cool Dampers – against unwanted vibration
- High End Chip Set for optimum sound
- Ultra low noise semiconductors
- SMD technology

### Speed Box II

A very useful accessory for most Pro-Ject turntables (excluding Debut III E), that do not have built-in electronic speed change. The Speed Box II performs this change by the push of a button between 33 and 45 rpm. The quartz regulation and filter circuit gives a stable speed reference.

#### Electronic speed control with switch (33/45rpm) for Pro-Ject and other turntables

- Suitable for turntables with wall power supply (16V/AC synchronous motor)
- Quartz controlled speed, switchable between 33 and 45rpm
- Microprocessor controlled
- For better smoothness of drive motor



### Speed Box SE II

The Quartz-controlled oscillator of the Speed Box SE II generates clean AC-power without mains distortion. Power outputs are galvanic decoupled from the input current. Many turntables in the market (including all the Pro-Ject models) use AC synchronous motors and the Speed Box SE II can be used for ultimate speed consistency and electronic speed change between 33 and 45rpm. Additionally, speed can be altered in graduated steps on either setting.

#### Electronic speed control with switch (33/45rpm) for Pro-Ject and other turntables

- Same features as Speed Box II, but for 230 Volt and 16 Volt AC
- Fine adjustable motor speed in  $\pm 20$  steps
- Digit display in blue colour
- Ultra stable voltage with mains filter

#### Features for all Speed Box products

- Solid and compact casing that protects against vibration and radiation
- Black or silver faceplate
- Separate powersupply (included)



**Additional information Speed-Box II / Speed-Box SE II:** with turntable Pulley SB (accessory) used with Speed-Box II or Speed-Box SE II following models can perform 33/45/78rpm RPM 5 • 1-Xpression • Debut III • Debut SE II • Debut III Esprit.

### 9cc, 10cc, 12cc Evolution

#### Tone-arms Pro-Ject 9cc, 10cc und 12cc Evolution

Extremely rigid precision carbon fibre tone-arms that are available in 3 lengths: 9, 10 and 12 inch. Resonance optimised design with nearly un-measurable friction will produce stunning results used in conjunction with most of the worlds best phono cartridges. Overall distortion is reduced by more than 50 %, because of sorbothane counterweight damping and other resonance optimising technologies. A newly designed anti-skating mechanism underlines the exceptional quality of this true "State-of-the-art" tone-arm.



#### 9cc, 10cc und 12cc Evolution • precision tonearms with carbon-fibre armtube/headshell

- Generation 2 Carbon technology
- Conical armtube avoids standing wave reflections
- Highest selection of components
- Antiresonance heavy mass Cardan bearing block
- Inverted bearing design with four hardened ABEC7 spec ballraces
- Solid armbase permits accurate height adjustment of armtube and VTA (vertical tracing angle)
- Single-screw fixing of armtube allows rotation for easy adjustment of needle azimuth despite fixed headshell
- Highly flexible top-grade copper internal wiring
- Silicon damped tone-armlift
- Resonance optimized sorbothane enhanced counterweight construction
- Improved antiskating and tone-arm lift mechanics
- Standard with Linn mount available in 9" 10" or 12" length
- Connection options are: Flying leads, 5 Pol Din, 20 cm cable with Box with RCA connectors female
- On request Rega mount and Rega tone-arm length available

#### Tone-arme Pro-Ject 9cc und 10cc

Pro-Ject 9cc, 10cc and 12cc are also made of carbon fibre, but utilise slightly less refined materials compared to the Evolution types. Equipped with standard Pro-Ject counter-weights, they do offer outstanding sonic quality with almost any MM or MC cartridge.

### GROUND IT DELUXE 1 & 2

Perfect granular filled bases with adjustable conical feet for resonance-free turntable placement. Two different sizes offer suitability for and smaller turntables. Piano finish, that perfectly matches the charcoal finish of Pro-Ject turntables.

Dimensions Ground it deluxe 1: 500 × 65 × 400 (11,5 kg)

Dimensions Ground it deluxe 2: 515 × 285 × 415 (8,3 kg)



### WMI-1, WMI-2 and WMI-3

Three different wall mounting platforms for optimum placement of your turntable. All models offer adjustable spikes to level the record player.

Surface area WMI-1: 460 × 355 mm (Overall measures : 460 × 90 × 415)

Surface area WMI-2: 460 × 355 mm (Overall measures : 490 × 260 × 455)

Surface area WMI-3: 520 × 450 mm (Overall measures : 635 × 290 × 455)

### PICK IT CARTRIDGE

The Pick-it Moving Coil cartridge was developed in cooperation with the leading manufacturer Ortofon. It is optimised for middle class tone-arms like Pro-Ject 8.6c and Pro-Ject 9c. Using the Moving coil principle we are sure that the full dynamic spectrum of our turntables can be enjoyed. Because of its high output this MC cartridge should be connected to the MM input of your phono preamp.



### MEASURE IT

Adjustment and control of tracking force.







## COVER IT 1 & 2

Universal acrylic dust covers in 2 sizes  
Dimensions Cover-it 1: 525 x 290 x 425 mm  
Dimensions Cover-it 2: 450 x 250 x 355 mm

## RECORD PUCK

Heavy weight record clamp.



## ADJUST IT

Adjustment tool for tone-arm bearings



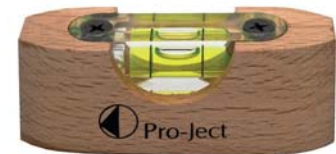
## 78RPM Pulley-Set

Optional pulley set converts any Pro-Ject turntable for shellac playback. Please note that a special cartridge stylus may be required.



## LEVEL IT

Spirit level for optimum positioning of a turntable.



## ALIGN IT

Adjustment tool for perfect cartridge mounting on any turntable / tone-arm.



## STROBE IT

Control of turntable speed.



## BRUSH IT

Carbon-fibre brush for record cleaning.



## GREASE IT

High-tech lubricant for constant velocity.



## CONNECT IT

### CONNECT IT signal cables

Signal cables optimised for use with turntables. Highly flexible with low capacitance and perfect shield. These cables were developed to have low colouration and are handmade in Europe. "State-of-the-Art" components for leads, dielectric and plugs were chosen after intense listening tests.

Specific lengths were chosen because of their significant advantages when carrying audio signals.

**CONNECT IT C** – pure OFC (oxygen free copper)

**ConNECT IT CC** – pure OFC (oxygen free copper) with carbon layer

**CONNECT IT SI** – pure silver for ultimate performance.

### Common features

- 2 RCA > 2 RCA Interconnect
- Top-quality pure conductors
- European manufacturing
- Double symmetric assembly
- Low capacitance
- Efficient screening to avoid interspersion
- High quality, very flexible dielectric
- Silver plated contacts
- Available in 0,205; 0,41; 0,82 ; 1,23 ; 1,85; 2,46; 4,92 meter lengths

### CONNECT IT PHONO 5P VERSION

- 5-P (5-Pol-jack > 2 RCA plugs plus separate ground cable)

### CONNECT IT PHONO RCA VERSION

- Phono-RCA (2 RCA > 2 RCA, left + right channel in one outer jacket plus separate ground cable)

### CONNECT IT RCA VERSION

- RCA (2 RCA > 2 RCA, separate cables for left and right channel, (ideal for connection of Phono Box to amp)



### Record platter: ACRYL IT, Sandwich platter, Glass platter

As an upgrade for achieving specific sonic qualities for current, or older Pro-Ject turntables that are no longer available.



### CORK IT

Alternative record mat with special sonic qualities.



### FELT MAT

Individual colours give your turntable a very special appearance.



# Technical datas

	Debut III / Debut III Esprit	Debut III Phono SB / Debut III Phono USB	1 Xpression III	1 Xpression III Comfort	2 Xperience / 2 Xperience Comfort	6 perspeX	Xtension	RPM 1	RPM 5	RPM 6.1SB	RPM 9.1 / RPM 9.1X	RPM 10
Speeds/rpm	33, 45, 78	33, 45, 78	33, 45, 78	33, 45, 78	33, 45	33, 45, 78	33, 45, 78	33, 45, 78	33, 45, 78	33, 45, 78	33, 45	33, 45
Speed change, see legend A-E below	A	C	A	C	D · E	A	C	A	A	C	D	D
Power supply, see legend below	16V, 500 mAAC	16V, 500 mAAC	16V, 500 mAAC	16V, 500 mAAC	16V, 500 mAAC	16V, 500 mAAC	16V, 1000 mAAC	16V, 500 mAAC	16V, 500 mAAC	16V, 500 mAAC	16V, 500 mAAC	16V, 500 mAAC
Downforce range	10-30 mN	10-30 mN	10-30 mN	10-30 mN	10-30 mN	10-30 mN	10-35 mN	15-30 mN	10-30 mN	10-30 mN	10-30 mN	10-35 mN
Effective arm length	218,5 mm (8,6")	218,5 mm (8,6")	218,5 mm (8,6")	218,5 mm (8,6")	230 mm (9")	230 mm (9")	various options	218,5 mm (8,6")	230 mm (9")	230 mm (9")	230 mm (9")	254 mm (10")
Effective arm mass	7,5 g	7,5 g	8,7 g	8,7 g	9,5 g	8,0 g	various options	8,5 g	9,5 g	9,5 g	8,5 g	9 g
Counterweight for cartridges weighting from	3,5 – 5,5 g	3,5 – 5,5 g	4 – 7 g	4 – 7 g	various options	8 – 10 g	various options	4 – 9 g	6 – 10 g	6 – 10 g	6 – 10 g	6 – 9 g
Optional counterweights for cartridges weighting from	1,5 – 3,0 g / 6 – 9 g	1,5 – 3,0 g / 6 – 9 g	3 – 5 g / 7 – 12 g	3 – 5 g / 7 – 12 g	various options	5 – 7 g 11 – 14 g	various options	—	4 – 6 g / 9 – 11 g / 10 – 15 g	4 – 6 g / 9 – 11 g / 10 – 15 g	5 – 8 g / 8 – 11 g / 11 – 15 g	7 – 11 g 10 – 15 g
Platter weight with mat * puck * clamp	1,3 kg - 0,9 kg	1,3 kg	2,2 kg	2,2 kg	2 kg	1,85 kg	5,0 kg	1,6 kg	1,75 kg	4,25 kg	4,25 kg	6,15 kg
Dust cover, see also legend **	4	4	4	4	4	4	4	Cover it, optional	Cover it, optional	Cover it, optional	Cover it, optional	Cover it, optional
Height with dust cover open **	365 mm	365 mm	365 mm	365 mm	390 mm	360 mm	550 mm	115 mm	145 mm	170 mm	180 mm	on Ground it deluxe 1: 275 mm
Depth with dust cover open **	405 mm	405 mm	405 mm	405 mm	460 mm	460 mm	560 mm	350 mm	300 mm	330 mm	325 mm	on Ground it deluxe 1: 400 mm
Dimensions with dust cover closed, see also legend ***	415 x 118 x 320	415 x 118 x 320	415 x 118 x 320	415 x 118 x 320	460 x 133 x 360	460 x 182 x 360	550 x 250 x 450	382 x 115 x 350	371 x 145 x 300	385 x 170 x 330	440 x 180 x 325	on Ground it deluxe 1: 500 x 275 x 400
Weight	5,5 kg / 5,1 kg	5,8 kg	6,3 kg	6,7 kg	7,6 kg	10,5 kg	20,0 kg	3,2 kg	6,5 kg	8,0 kg	12,5 kg	with Ground it deluxe 1: 28,1 kg

\* Power supply via external plug-type transformer, for 220-240V / 50Hz AC mains or 100 - 120V / 60Hz AC mains.

\*\* The optional Cover it dust cover must be completely removed for the RPM models.

\*\*\* RPM model dimensions without optional Cover it dust cover.

Dimensions: W x H x D

Specifications are subject to change without notice.

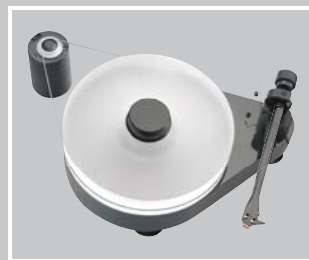
A Manual speed change 33/45 rpm or electronic with Speed Box 78 rpm with special pulley, manual change and Speed Box.

B Manual speed change 33/45 rpm, no connection for Speed Box.

C Electronic speed change 33/45 rpm, 78 rpm manual change.

D Manual speed change 33/45 rpm or electronic with Speed Box.

E Electronic speed change 33/45 rpm.



**Pro-Ject Audio Systems**, Margaretenstrasse 98, A-1050 Wien, AUSTRIA

Tel.: +43 1 5448980, Fax: +43 1 5456697, e-mail: [info@project-audio.com](mailto:info@project-audio.com)