

HIGH FREQUENCY DE-COUPLER

Q ACOUSTICS



Speakers, Audio Systems
and Installed Sound



BEAUTIFULLY ENGINEERED SOUND



*"It's amazing what Q Acoustics
has accomplished..."*

What Hi-Fi? Sound & Vision (May 2014)

Contents

Q Acoustics	2-3
-------------	-----

LOUDSPEAKERS

3000 Series	4-5
Concept Series	6-9
7000i Series	10-11

AUDIO SYSTEMS

Media 4 Hi-Fi Soundbar	12-13
Media 7000 2.1 system	14
Media BT3 Wireless Hi-Fi Speakers	15

INSTALLED SOUND

Q Install	16-17
In-Ceiling Speakers	18
Performance In-Ceiling Speakers	19
Wetroom and Weatherproof In-ceiling	20-21
In-Wall Speakers	22
Indoor / Outdoor Speakers	23

PRODUCT SPECIFICATIONS	24-29
------------------------	-------





Q Acoustics was established in 2006; not by a wealthy 'music lover' or retired 'rock musician' (who, in their marketing material, would inevitably claim to have spent decades being dissatisfied with all the speakers available and had therefore decided to make their own). Q Acoustics in contrast, was founded by professional engineers and businessmen with the sole aim of developing a highly successful loudspeaker brand.

It's that simple, a completely focussed, professional understanding of engineering business has driven our remarkable success. Because we recognised, long before anybody even dreamed of designing our first products; the only way Q Acoustics could possibly enjoy commercial success was to design and produce

loudspeakers which were, without question, demonstrably superior to their similarly priced competitors. In other words, we had to make the best affordable loudspeakers in the world.

So that's what we did.

Please do not misunderstand us. Although we have little history or tradition, we do have vast expertise. To produce the world's best loudspeakers, we obviously had to engage the world's best loudspeaker designers and provide unlimited access to the most advanced design and engineering facilities.

So that's what we did.

And that's what we continue to do.



3000 SERIES

A FUSION OF BOTH EVOLUTIONARY AND REVOLUTIONARY THINKING, THE 3000 SERIES BENEFITS FROM STATE-OF-THE-ART DRIVER DESIGN, AS WELL AS IMPROVEMENTS TO THE CABINET CONSTRUCTION DERIVED FROM OUR GROUND BREAKING 'CONCEPT' MODELS.



3010

This 'Ultra Compact' bookshelf speaker sets new standards for sonic performance in its class. It's all new, '2 in 1' Concentric Ring Dome tweeter, new Aramid Fibre/Paper cones for the 100mm bass unit, uprated 'audiophile' crossover components and a stronger, lower resonance cabinet.

All these factors combine to make a make an affordable, small loudspeaker of unparalleled quality.

The new 3010 is suitable for both hi-fi music and home cinema use and is an ideal match for the 3090C centre speaker and 3070S subwoofer.

The 3010 can also be stand or wall mounted, using the dedicated 3000ST stand or 3000WB wall bracket.

3010 BOOKSHELF SPEAKER

Stock Code

- QA3010 Q 3010 SPEAKER MATTE GRAPHITE (PAIR)
- QA3012 Q 3010 SPEAKER AMERICAN WALNUT (PAIR)
- QA3014 Q 3010 SPEAKER BLACK LEATHER (PAIR)
- QA3016 Q 3010 SPEAKER BLACK LACQUER (PAIR)
- QA3018 Q 3010 SPEAKER WHITE LACQUER (PAIR)



3000ST Stand

Features

- Integral cable management
- Acoustic wadding inserts within columns
- Textured satin finish
- Top plates for the 3010 and 3020 loudspeakers included
- Dimensions (W x H x D mm) 260 x 665 x 300



3020

WHAT HI-FI?
AWARDS 2015

Stereo speakers
Best stereo speaker under £200
Q Acoustics 3020

Forbes

WHAT HI-FI?
SOUND AND VISION
WHATHIFL.COM
★★★★★

Like its smaller sibling, the medium sized 3020 bookshelf model benefits from the advanced, low distortion, wide dispersion, new 3000 Series Concentric Ring Dome tweeter; uprated 'audiophile' crossover and improved low resonance cabinet. In addition, it boasts a larger 125mm drive unit, with the new Aramid Fibre/Paper cone material. This larger driver delivers an extended bass response with fast dynamics, wonderfully open, realistic midrange and an extraordinary 'being there' three dimensional soundstage.

The new 3020 is the natural choice for music lovers who want to experience 'full performance', superb quality sound in small and medium sized rooms.

The 3000ST or 3000WB allow the 3020 to be stand or wall mounted.

3020 BOOKSHELF SPEAKER

Stock Code

- QA3020 Q 3020 SPEAKER MATTE GRAPHITE (PAIR)
- QA3022 Q 3020 SPEAKER AMERICAN WALNUT (PAIR)
- QA3024 Q 3020 SPEAKER BLACK LEATHER (PAIR)
- QA3026 Q 3020 SPEAKER BLACK LACQUER (PAIR)
- QA3028 Q 3020 SPEAKER WHITE LACQUER (PAIR)

3000WB Bracket



ACCESSORIES

Stock Code

- QA3100 Q 3000WB WALL BRACKET (EACH)
- QA3106 Q 3000ST SPEAKER STANDS BLACK (PAIR)
- QA3108 Q 3000ST SPEAKER STANDS WHITE (PAIR)



3050

WHAT HI-FI?
SOUND AND VISION
WHATHIFL.COM
★★★★★

Hi-Fi
Choice
EDITOR'S
CHOICE

WHAT HI-FI?
AWARDS 2015

Stereo speakers
Best floorstander under £600
Q Acoustics 3050

Visually striking in five beautiful finishes including Lacquered Gloss Black, Lacquered Gloss White and 'Leather effect', the perfectly proportioned 3050 is the flagship of the new 3000 Series. Improved twin 165mm Aramid Fibre/Paper cone drivers deliver exceptional bass extension and midrange openness, whilst the new '2 in 1', Concentric Ring Dome tweeter adds astonishingly clear and smooth high frequencies. Performance is further enhanced, both sonically and aesthetically, by its integral steel 'outrigger' plinth with floor spikes.

The flagship 3050 is the perfect loudspeaker for larger rooms. It boasts the ultra-low levels of distortion, typically found of speakers costing three or four times its price.

Not surprisingly, as a result it delivers truly unrivalled sound quality.

3050 FLOORSTANDING SPEAKER

Stock Code

- QA3050 Q 3050 SPEAKER MATTE GRAPHITE (PAIR)
- QA3052 Q 3050 SPEAKER AMERICAN WALNUT (PAIR)
- QA3054 Q 3050 SPEAKER BLACK LEATHER (PAIR)
- QA3056 Q 3050 SPEAKER BLACK LACQUER (PAIR)
- QA3058 Q 3050 SPEAKER WHITE LACQUER (PAIR)



5.1 Cinema Pack

Perfect for every occasion, the new 3000 Series 5.1 Cinema Pack will unleash the full potential of your home cinema electronics.

Its exquisitely detailed sound will convey all the atmosphere, natural dialogue and when required, the full bodied explosive drama of every movie soundtrack.

But of course, being Q Acoustics loudspeakers, they don't just deliver fantastic home cinema sound. Every new 3000 Series model is also an outstanding, genuine hi-fi loudspeaker. So the 3000 home cinema pack is also your best choice if you want to enjoy wonderful stereo musical performances.

3000 5.1 CINEMA PACK

Stock Code

QA3080 Q 3000 5.1 CINEMA PACK MATTE GRAPHITE
QA3082 Q 3000 5.1 CINEMA PACK AMER. WALNUT
QA3084 Q 3000 5.1 CINEMA PACK BLACK LEATHER
QA3086 Q 3000 5.1 CINEMA PACK BLACK LACQUE
QA3088 Q 3000 5.1 CINEMA PACK WHITE LACQUE

FINISHES



American Walnut



Graphite



Leather Effect



Black Lacquer



White Lacquer

3070S Subwoofer

This powerful, 140watts rms, twin 170mm drive unit subwoofer will bring the full explosive majesty of blockbuster movie soundtracks into your living room.

Naturally, being a Q Acoustics design, it will also accurately reproduce the fast 'twang' and detail of a double bass or any other low frequency musical notes. That's why Q Acoustics is your best choice for both music and movies.

3070S SUBWOOFER

Stock Code

QA3070 Q 3070S SUBWOOFER MATTE GRAPHITE
QA3072 Q 3070S SUBWOOFER AMERICAN WALNUT
QA3074 Q 3070S SUBWOOFER BLACK LEATHER
QA3076 Q 3070S SUBWOOFER BLACK LACQUER
QA3078 Q 3070S SUBWOOFER WHITE LACQUER

3090C Centre

A centre channel speaker with two of the new 100mm, Aramid Fibre/Paper cone bass drivers, and the new 3000 Series wide dispersion, '2 in 1', Concentric Ring Dome high frequency unit.

The 3090C acoustically matches and complements any of the 3000 Series models.

Removable rear port bungs means it can deliver its outstanding, seamless performance whether it is bookshelf, stand mounted or wall mounted by using the dedicated 3000WB wall bracket.

3000C CENTRE SPEAKER

Stock Code

QA3090 Q 3090C CENTRE MATTE GRAPHITE
QA3092 Q 3090C CENTRE AMERICAN WALNUT
QA3094 Q 3090C CENTRE BLACK LEATHER
QA3096 Q 3090C CENTRE BLACK LACQUER
QA3098 Q 3090C CENTRE WHITE LACQUER

CONCEPT 20: NOTHING SHORT OF SENSATIONAL

THIS EXCEPTIONAL PERFORMANCE HAS BEEN ACHIEVED BY USING BREAKTHROUGH TECHNOLOGY TO OVERCOME THE FUNDAMENTAL PROBLEMS OF SPEAKER DESIGN



WHAT HI-FI?
AWARDS 2014

Stereo speakers
Best stereo speaker £200-£400
Q Acoustics Concept 20

"Looking for a top-quality sub-£500 standmount speaker? Ignore this one at your peril."

What Hi-Fi? Sound and Vision, Awards 2014

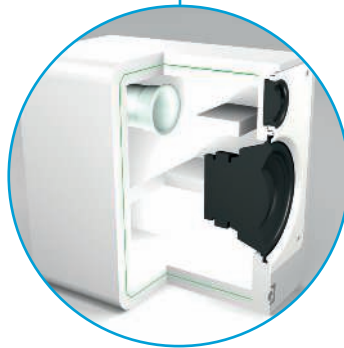
Concept 20

The 'Concept 20' is a special loudspeaker which goes beyond anything that Q Acoustics has achieved before. It's a beautifully styled product which we confidently believe provides a level of sonic performance previously thought impossible at its price point.

To achieve this extraordinary result, Q Acoustics' design team applied advanced technology to address the fundamental problem of cabinet resonance, widely recognised as the single biggest hurdle preventing 'high end' sonic performance at an 'affordable' price.

The 'Concept 20' proves cabinet resonance need be a problem no longer.

Its Gelcore™ Construction, 'cabinet within a cabinet' design, incorporates a bespoke, resonance absorbing, non-setting adhesive which converts the kinetic energy and disperses it as heat. This substantially reduces distortion and allows the individual drive units to deliver their optimal performance.



The 'cabinet within a cabinet' Gelcore™ construction dramatically reduces resonances and colouration.

WHAT HI-FI?
SOUND AND VISION
WHATIFI.COM
AWARDS 2013
PRODUCT OF THE YEAR
SPEAKERS
Q ACOUSTICS CONCEPT 20

"Superb...a scale and volume of sound that seems scarcely credible from such a small cabinet"

WHAT HI-FI?
SOUND AND VISION
WHATIFI.COM
★★★★★

What Hi-Fi? Sound and Vision,
May 2013

"Exceptionally clean, controlled and detailed"

AV Forums, April 2013

avforums
HIGHLY RECOMMENDED
SPEAKERS

CONCEPT 20

Stock Code

QA2620 CONCEPT 20 SPEAKER BLACK (PAIR)
QA2625 CONCEPT 20 SPEAKER WHITE (PAIR)

ACCESSORIES

Stock Code

QA2120 CONCEPT 20 STAND BLACK (PAIR)
QA2125 CONCEPT 20 STAND WHITE (PAIR)

FINISHES



Lacquered Gloss Black



Lacquered Gloss White





THIS STATE-OF-THE-ART, ULTRA-LOW
RESONANCE AND BEAUTIFULLY LACQUERED
CABINET DESIGN ALLOWS THE DRIVE UNITS
TO PERFORM AT THEIR VERY IMPRESSIVE BEST

AN EXTRAORDINARILY THREE-DIMENSIONAL
'BEING THERE' MUSICAL EXPERIENCE



*"Surprising sonic agility and composure...
a wonderfully inviting sound"*

What HI-FI? Sound & Vision March 2014



Concept 40

The Concept 40 is Q Acoustics' flagship floorstanding speaker. It is the newest addition of the acclaimed, award winning Concept series and, like so many Q Acoustics models, delivers an unparalleled sonic performance at its price. We firmly believe the Concept 40 sets new standards, even outperforming many speakers in higher price brackets.

In common with the Concept 20, its award-winning 'little brother', the new Concept 40's extraordinary soundstage, dynamics and sheer musicality is achieved by incorporating its bespoke drive units into a 'Gelcore™ Construction' cabinet. This State-of-the-Art, ultra-low resonance and beautifully lacquered cabinet design allows the drive units to perform at their very impressive best.

The low distortion drive units incorporate powerful oversized magnets to ensure wide dynamics and an ultra-fast transient response. The elegant tripod stand allows the Concept 40 to achieve perfect rigidity and floor contact which further enhances its performance.

Even the speaker's attractive aluminium fascia plate is not purely decorative. It's part of an assembly which clamps a butyl rubber sheet to the front panel to reduce cabinet resonance still further.

With 90dB sensitivity and a nominal impedance of 6 ohms, the Concept 40 is easily driven by any good quality amplifier. This striking floorstanding loudspeaker is available in either high gloss black, or high gloss white finishes.

CONCEPT 40

Stock Code

QA2630 CONCEPT 40 SPEAKER BLACK (PAIR)

QA2635 CONCEPT 40 SPEAKER WHITE (PAIR)

FINISHES



Lacquered Gloss Black



Lacquered Gloss White



Concept 5.1 Cinema Pack

We are proud to announce the Concept 5.1 cinema pack. Movie lovers can now experience soundtracks and dialogue with the same unparalleled level of sonic performance that audiophiles already enjoy from the award-winning Concept stereo models.

This outstanding level of performance is achieved because the 'Concept' models incorporate 'Gelcore™ Construction' loudspeaker cabinets; the ground breaking technology, developed by Q Acoustics, which almost totally eliminates loudspeaker cabinet resonance – a major factor limiting the sonic performance of modern loudspeakers.

Wall mounting your speakers?

We have designed elegant 'floating' glass shelves to perfectly complement your Q Acoustics loudspeakers. Strong yet visually discreet; the bespoke, space saving shelves allow you to securely mount your bookshelf or centre speakers to suitable walls in your listening area.



CONCEPT 5.1 CINEMA PACK

Stock Code

QA2680 CONCEPT CINEMA PACK BLACK

QA2685 CONCEPT CINEMA PACK WHITE

(comprises Concept 40 + Concept Centre + Concept 20 + Q2070i Subwoofer)

FINISHES



Lacquered Gloss Black



Lacquered Gloss White

DON'T BE MISLED BY BEAUTY.

THE 7000i SERIES SPEAKERS MAY APPEAR TO BE MERELY ELEGANT AND SLENDER 'SATELLITE' SPEAKERS. HOWEVER, THEY ARE IN REALITY, FULL RANGE, TRUE HI-FI SPEAKERS WHICH DELIVER A WONDERFULLY MUSICAL SOUNDSTAGE, EVEN WITHOUT A SUBWOOFER.



7000LRi

Don't be misled by the appearance of this award winning model's small elegant, all aluminium cabinet. First and foremost, the 7000i L+R are 'full range', true hi-fi loudspeakers, capable of delivering an excellent sonic performance across a wide range of applications. Whether placed on a shelf or furniture; wall mounted using its beautifully designed integrated bracket, or free standing on the slim, dedicated optional floor stand, the precision of its dynamic, ultra-low distortion and spacious three dimensional sound will astonish.

Combine them with the matching 7070Si compact subwoofer and their already impressive performance is transformed; comfortably outperforming many large floorstanding models.

The 7000LRi speakers boast completely new 'High Excursion' drive units, 'Ring Radiator' tweeter and upgraded crossover. The result, when compared to its predecessor, the multi-award winning 7000 model, the new 7000i is a speaker with even lower distortion, faster transient response and more dynamic, yet sweeter and more natural sound.

7000LRi SATELLITE SPEAKERS

Stock Code
QA7827 Q7000LRi STEREO SPEAKERS BLACK PAIR
QA7825 Q7000LRi STEREO SPEAKERS WHITE PAIR

7070Si Subwoofer

The 7070Si is a compact subwoofer that, like its matching 'satellite' speakers in the new 7000i system, delivers a class leading sonic performance. The powerful 150W Class D amplifier drives a 200mm low frequency driver, as capable of faithfully reproducing the speed and 'twang' of a double bass as it is the prolonged, earth moving rumble of a 'block buster' explosion.

The 7070Si's revolutionary 'Internal Firing' design makes it less dependant on room position to achieve optimum performance. For ultimate convenience, the 7070Si can even be wall mounted using an optional bracket.

"The Q Acoustics is a mighty performer."

"The control and smoothness it brings is unusual for such small speakers and especially ones at such a sensible price point."

"Build quality is excellent"

AV Forums, Best Buy, December 2013

7070Si SUBWOOFER

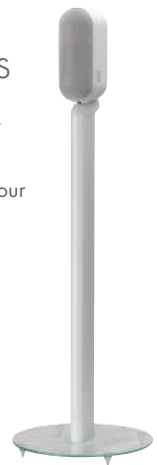
Stock Code
QA7843 Q7070Si SUBWOOFER BLACK EACH
QA7841 Q7070Si SUBWOOFER WHITE EACH

7000Ci Centre

The integrated table stand/wall bracket of the new 7000Ci centre channel loudspeaker attaches to the centre of the cabinet, allowing it to present horizontally. Apart from this, it is identical to the 7000i L+R models and therefore delivers an absolutely seamless soundstage for the listener.

Speaker Stands

The matching 7000ST speaker stand incorporates a 'cable management' system to hide your speaker cable and is elegance personified. It enhances the appearance and optimises the sonic performance of the 7000LRi satellites.



7000Ci CENTRE SPEAKER

Stock Code
QA7837 Q7000Ci CENTRE SPEAKER BLACK EACH
QA7835 Q7000Ci CENTRE SPEAKER WHITE EACH

ACCESSORIES

Stock Code
QA7815 Q7000ST SPEAKER STANDS BLACK PAIR
QA7817 Q7000ST SPEAKER STANDS WHITE PAIR
QA7821 Q7000SbI SUBWOOFER BRACKET EACH

THE 7000i IS AN IDEAL SOLUTION WHEN THERE IS A REQUIREMENT FOR A SMALL DISCREET LOUDSPEAKER AND WHERE A SUBWOOFER CANNOT BE ACCOMMODATED

WHAT HI-FI?
AWARDS 2014

Speaker packages
Best style package £700-£1000
Q Acoustics Q7000i



However, combine them with the matching 7070Si subwoofer and they will astonish you. Configured as a 2.1 stereo speaker system; their smooth, open, dynamic and ultra-low distortion sound quality comfortably outperforms many large (and far more expensive) floorstanding loudspeakers.

As a full 5.1 Home Cinema speaker package the new 7000i is simply unrivalled. Its precision soundstage, powerful dynamics and rich deep bass make it a natural choice for both home cinema enthusiasts and discerning music lovers.

"This stylish compact speaker package is hands down the best we've heard for the money."

Trusted Reviews, June 2014



"The Q7000i is a stunning package"

"Got £900 to spend on a sub sat package? Spend it here"

What Hi-Fi? Sound and Vision, October 2013



"Exceptionally refined and spacious performance."

"Superb in 2.1"

"Solid build and useful features"

AV Forums, Best Buy, December 2013



2.1 Stereo Pack

STEREO PACK CONTENTS:

- 1 x Pair 7000LRi Speakers
- 1 x 7000Si Subwoofer

7000i 2.1 STEREO PACK

Stock Code

QA7873 Q7000i 2.1 SPEAKER PACKAGE BLACK
QA7871 Q7000i 2.1 SPEAKER PACKAGE WHITE

FINISHES



Matte Black Matte White



5.1 Cinema Pack

CINEMA PACK CONTENTS:

- 2 x Pairs 7000LRi Speakers
- 1 x 7000Ci Centre Speaker
- 1 x 7000Si Subwoofer

7000i 5.1 CINEMA PACK

Stock Code

QA7863 Q7000i 5.1 SPEAKER PACKAGE BLACK
QA7861 Q7000i 5.1 SPEAKER PACKAGE WHITE

FINISHES



Matte Black Matte White

AUDIO SYSTEMS | M4 HI-FI SOUNDBAR



MADE FOR MUSIC AND MOVIES,
THE M4 PLAYS MUSIC, TV AND
MOVIES EQUALLY WELL WITH
NO EXTRA BOXES REQUIRED

M4 HI-FI SOUNDBAR

THE IDEAL 'CLUTTER FREE' SOLUTION FOR GREAT TELEVISION SOUND

"Dialogue sounds rich, warm and is well projected, but most impressive is the subwoofer"

Home Cinema Choice, October 2014



"Sounds fantastic. Great dispersion of sound...powerful bass"

What Hi-Fi? Sound & Vision, August 2014



FOR FILM LOVERS WHO WANT TO 'FEEL THE EARTH MOVE', A SEPARATE SUBWOOFER OUTPUT IS INCLUDED.

M4

HI-FI SOUNDBAR

As well being the ideal solution for anyone who wants to enjoy great television sound but who doesn't want the 'clutter' of conventional speakers, the M4 Hi-Fi Soundbar is a complete hi-fi system in its own right. Simple analogue and digital 'plug and play' connections to your TV or 'Set-top box' will deliver class leading television sound, whilst an advanced Bluetooth connection allows you to wirelessly stream music from your smartphone, tablet or other compatible devices. Naturally, there's also a 'spare' analogue auxiliary input for you to connect a CD player or other source component.

FEATURES

- Powerful 2.1 soundbar with built-in 100mm x 150mm subwoofer
- Wide dispersion 65mm x 65mm BMR drivers for room filling coverage
- Built-in wall bracket and anti-vibration feet included for shelf-mounting
- Bluetooth with aptX and NFC close-proximity connection
- Optical input with high quality DAC, analogue inputs and automatic source selection
- Mono output available for an additional subwoofer
- Basic controls on fascia and dedicated Remote Control
- Remote Control IR receiver supports Sky, Virgin Media and other remote codes
- W x H x D 1000mm x 105mm (90mm exc. feet) x 130mm (20mm at narrowest point)

M4 HI-FI SOUNDBAR

Stock Code

QA7410 M4 HI-FI SOUNDBAR

THE MEDIA 7000 IS A SMALL YET HUGELY POWERFUL AND DYNAMIC 2.1 BLUETOOTH AMPLIFIER/SPEAKER PACKAGE. IT CAN BE USED AS BOTH AN EXCELLENT STEREO MUSIC HI-FI SYSTEM AND FOR TV SOUND ENHANCEMENT.



Media 7000 2.1 System

The Q Acoustics Media 7000 is a beautifully styled, small yet hugely powerful music and home cinema 2.1 Bluetooth amplifier and speaker package.

The heart of the Media 7000 is Q Acoustics' new dedicated Q AVA stereo amplifier with a precision on-board DAC (digital to analogue converter), twin optical digital inputs, as well as analogue and advanced wireless Bluetooth connectivity.

Designed for the ultimate music and movie experience, the dedicated MoviEQ™ button delivers ultimate movie sound with cinematic bass.

The amplifier features signal sensing automatic source selection and can be controlled by most Sky and Virgin remote controls as well as its own small and neat IR handset.

The matching satellite speakers and subwoofer are Q Acoustics' multi-award winning and world renowned 7000i and 7070Si models.

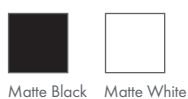
Accessories: Speaker Stands, Available in Black and White

MEDIA 7000 2.1 SYSTEM

Stock Code

- QA7710 Q MEDIA 7000 2.1 AUDIO SYSTEM BLACK
- QA7720 Q MEDIA 7000 2.1 AUDIO SYSTEM WHITE
- QA7910 Q AVA STEREO AV AMPLIFIER BLACK
- QA7920 Q AVA STEREO AV AMPLIFIER WHITE

FINISHES



CHANGE THE WAY YOU ENJOY YOUR TV, TABLET OR MOBILE SOUND WITH BT3

Simply connect the BT3 to your TV, or wirelessly to your tablet, and take your viewing experience to the next level. Whether you're using them for watching TV, movies or even playing games, the BT3 will deliver a huge improvement in sound quality.



"A wonderful TV wireless speaker system that won't break the bank"

Trusted Reviews, May 2014

"These speakers knock any similarly priced soundbars into a cocked hat"

What Hi-Fi? Sound and Vision, February 2014

"The Q BT3 serves it up masterfully"

"The results are highly satisfying with a powerful sound"

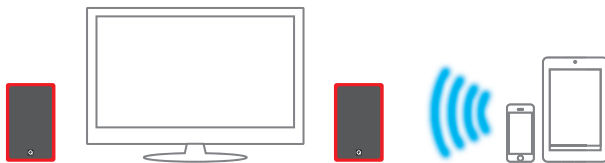
Hi-Fi Choice, January 2014

REAL HI-FI SPEAKERS REAL STEREO SOUND NO COMPROMISE

STREAM MUSIC FROM: Mobile phone, Tablet, Laptop
CONNECT TO: TV, Computer, Satellite, Music player



On the top of the right-hand speaker are volume controls and a standby button. The light changes colour according to input used.



Stream music via Bluetooth®, plus connect the audio output from your TV or set-top box to the BT3's built-in 100W amplifier and enjoy sound quality that comfortably outperforms typical 'single box' soundbars and docks.

*BT3 is compatible with both Sky and Virgin remote controls.

WHAT MAKES THE BT3 SPEAKERS SO SPECIAL?

Hidden within the BT3 speakers is a high quality, 2 x 50 Watts per channel amplifier, a Bluetooth V4.0 wireless receiver (with advanced 'aptX' capability for improved sound quality), and a low distortion Digital to Analogue Converter (DAC), accessed via an optical input. For movie lovers wishing to hear ultra-low frequency effects, there's a separate subwoofer output to connect your subwoofer of choice. A second line level input allows you to connect a CD, DVD, Blu-ray player or any other 'line level' source.

"A brilliant audio solution for nearly every requirement"

WHAT'S THE BEST WAY TO USE MY BT3 SPEAKERS?

The best way to experience the full capability of the new BT3 is connect it to your television or set-top box and enjoy it as a high quality, wireless hi-fi mini system at the same time! To make life even easier, you can control the volume and switch between inputs on your BT3 either with the small, elegant, infrared remote control included; or by the remote controls which come with many satellite and cable TV boxes, (including UK 'Sky' and 'Virgin' models).

BT3

WIRELESS HI-FI BLUETOOTH SPEAKERS

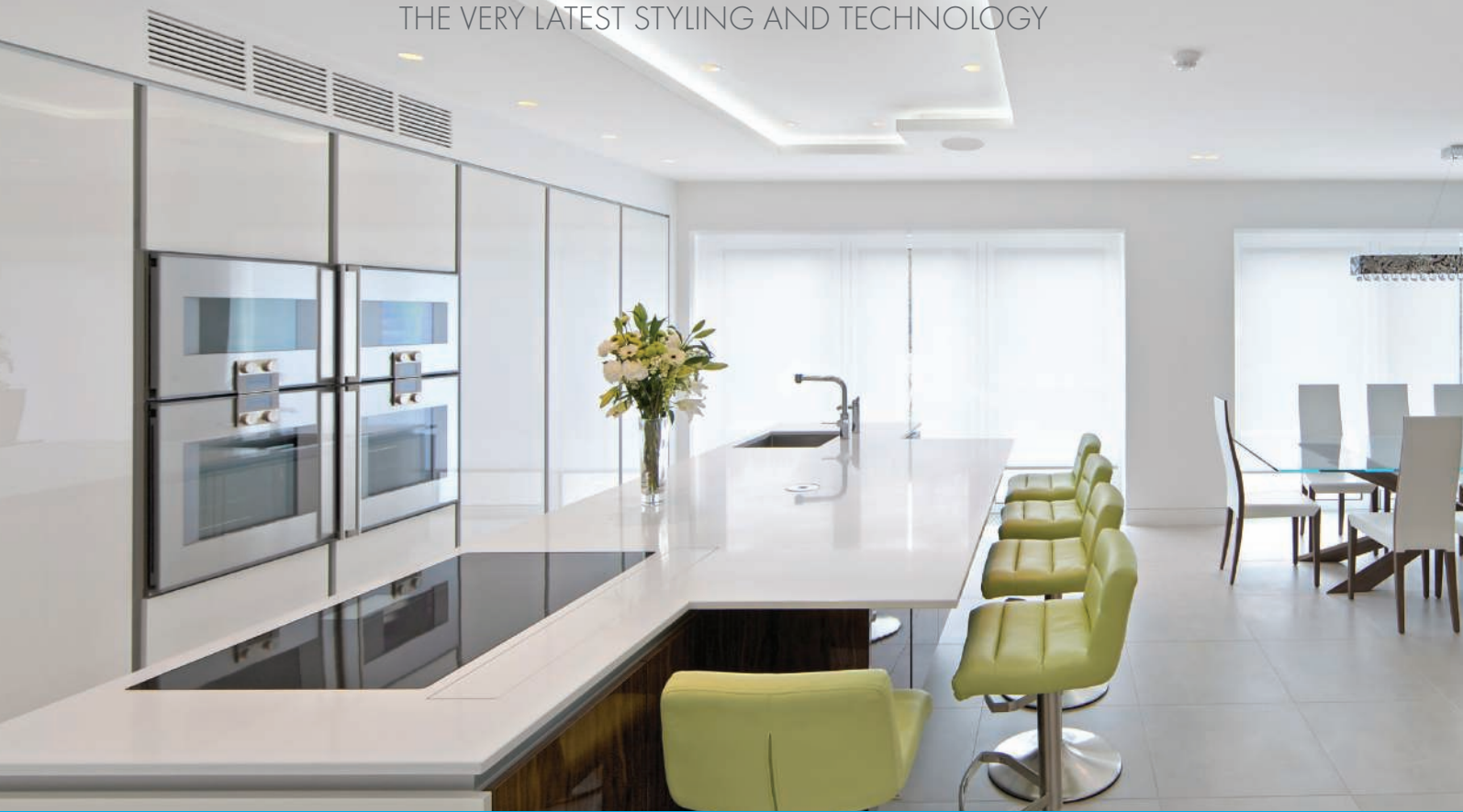
Stock Code

- QA7540 Q BT3 WIRELESS HI-FI SPEAKERS GLOSS BLACK
- QA7550 Q BT3 WIRELESS HI-FI SPEAKERS GLOSS WHITE
- QA7560 Q BT3 WIRELESS HI-FI SPEAKERS GLOSS RED

FINISHES



Q INSTALL IS AN EXCITING RANGE OF INSTALLATION LOUDSPEAKERS. DESIGNED TO MEET THE MOST DEMANDING REQUIREMENTS OF CUSTOM INSTALLERS AND THEIR DISCERNING CLIENTS, THEY FEATURE THE VERY LATEST STYLING AND TECHNOLOGY



FEATURES

- All the in-ceiling models boast polypropylene cones. In the superior 'Performance' variants this is an injection-moulded, mass damped, Nano Particle based driver cone, which delivers lower distortion and colouration.
- Q Install has used cutting edge industrial and acoustic engineering to create a striking bezel and grille design that clips magnetically into place. Circular and square grille options are available to ensure the perfect match for each customer's décor.
- Shallow depth requirement - all models are less than 84mm deep.
- Q Install speakers utilize 'UL94' flame retardant materials.
- Adjustable high frequency output level feature in the 'Performance' and 'Weatherproof' models.
- Swivel tweeters allow fine-tuning of the installation acoustics.
- Tweeters are fully 'open' on most models, avoiding the use of protective bridges through the integration of Automatic Tweeter dome Recovery technology (ATR) that restores the dome after accidental deformation.
- 'Performance' models feature a larger magnet assembly giving a 30% increase in program power handling capability. In addition; precision components are utilized in the crossover filters, together with gold plated connectors.
- Grille geometry has been carefully optimised to ensure the perfect balance between sound and discreet appearance.
- Square and circular magnetic grilles are fully interchangeable without any need to change or remove the loudspeaker.
- All models are moisture proof. The Weatherproof models (shown right) being suitable for more extreme use. Stainless steel fixings and corrosion resistant aluminium grilles are utilised together with fully sealed drive units to prevent water ingress.
- Q Install speakers come carefully packaged with an installation template and fitting instructions. All models feature protective driver dust covers and cloth backed grilles to facilitate painting should it be required.
- Many models are available as singles to aid installer convenience and reduce the overhead of excess stock.

Q INSTALL SPEAKERS

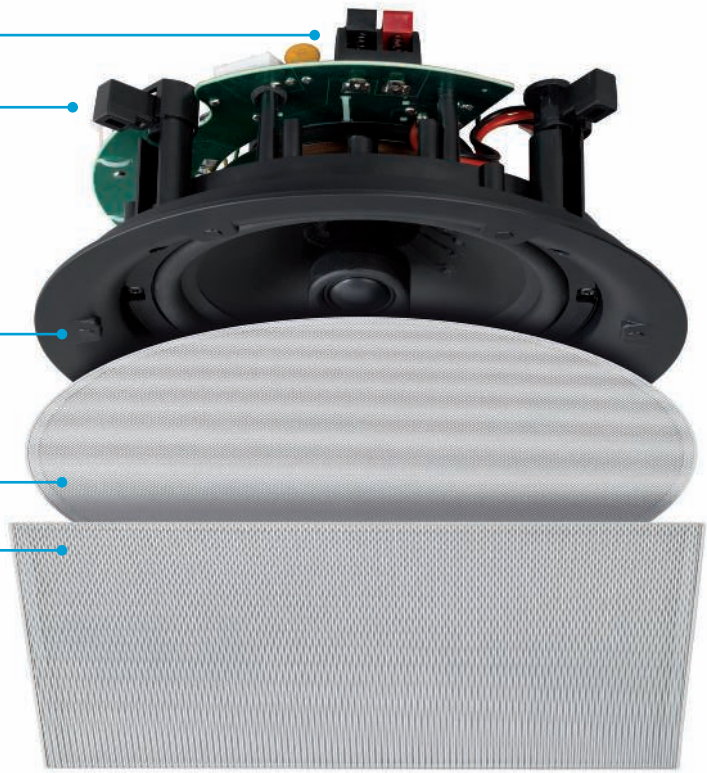
SHALLOW DEPTH: LESS THAN 84MM

EASY TO INSTALL: 'DOG-LEG' FIXINGS

EASY ACCESS: MAGNETIC GRILLE FIXINGS

ROUND OR SQUARE GRILLE OPTIONS AVAILABLE

ULTRA DISCREET: THIN BEZEL

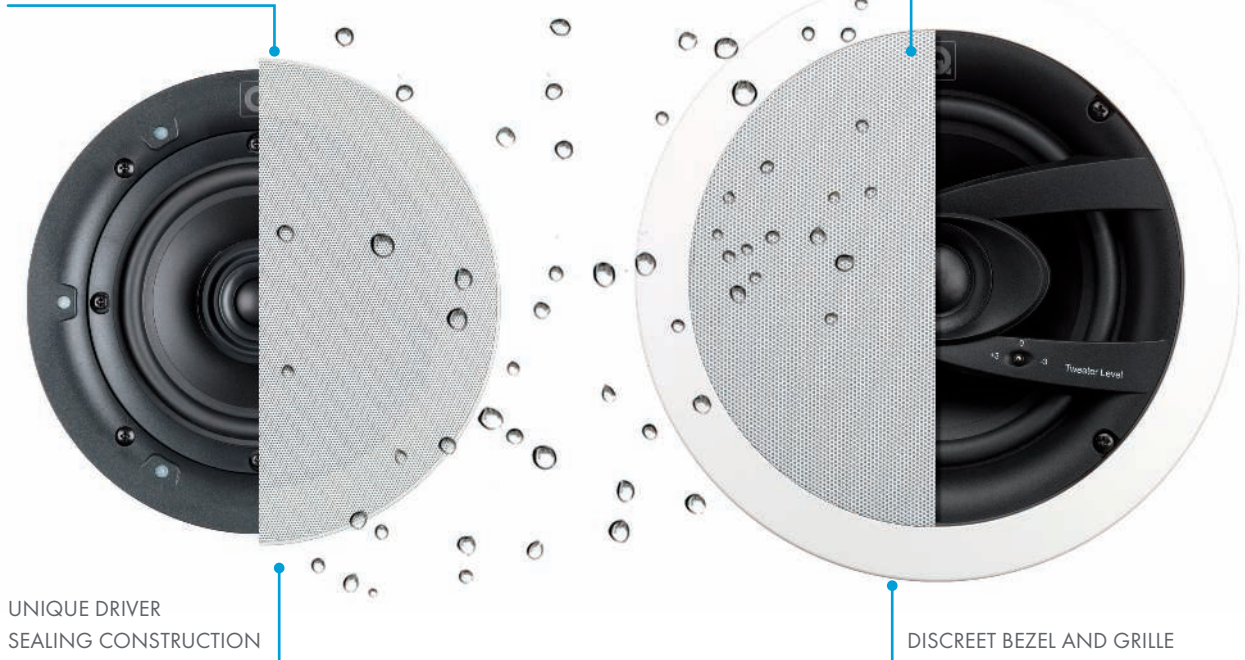


WETROOM AND WEATHERPROOF

Designed specifically to offer the latest low profile styling, together with excellent long term reliability and performance, for high humidity environments such as bathrooms.

LOW PROFILE STYLING

INDOOR OR OUTDOOR USE



UNIQUE DRIVER SEALING CONSTRUCTION

DISCREET BEZEL AND GRILLE

Q INSTALL IN-CEILING SPEAKERS

Q Acoustics Professional in-ceiling speakers feature the latest stereo speaker technology so that you can enjoy great sound with minimal installation. They give you the ability to listen to music throughout your home, even in bathrooms as they are moisture proof.

In-ceiling speakers enable you to enjoy the same music in many rooms, overcoming the impracticality of placing conventional, free standing speakers in every room.



Qi65C

6.5" IN-CEILING STEREO SPEAKER
CIRCULAR GRILLE



Qi65C ST

6.5" IN-CEILING SINGLE STEREO SPEAKER
CIRCULAR GRILLE



Qi65CB

6.5" IN-CEILING BACKGROUND SPEAKER
CIRCULAR GRILLE

GENERAL INFO:

The Qi65CB speaker has been designed to offer exceptional value in terms of performance and cost, its efficiency is particularly high, in fact it requires less than half the amplifier power of the standard Qi65C to produce the same volume of sound. It is also incredibly shallow making it Q Install's slimmest speaker with a maximum rear depth of just 73 mm.

BACKGROUND SPEAKERS

Stock Code

Qi1105 Qi65CB BACKGROUND SPEAKERS (PACK OF 10)



Qi65S

6.5" IN-CEILING STEREO SPEAKER
SQUARE GRILLE



Qi65S ST

6.5" IN-CEILING SINGLE STEREO SPEAKER
SQUARE GRILLE

FEATURES

- Bezel and grille design that clips magnetically into place, with the grille geometry being carefully optimized to ensure the perfect balance between sound and discreet appearance
- The HF is adjustable by + or - 3dB from a switch on the crossover
- Circular and square grille options are available to ensure the perfect match for each customer's decor.
- They are hardly visible in your home and take up virtually no space
- Less than 84 mm deep.
- 'UL94' flame retardant materials
- Moisture proof
- Q Install speakers come carefully packaged with installation template and fitting instructions

IN-CEILING SPEAKERS

Stock Code

Qi1110 Qi65C IN-CEILING CIRCULAR GRILLE (PAIR)
 Qi1120 Qi65S IN-CEILING SQUARE GRILLE (PAIR)
 Qi1150 Qi65C ST STEREO IN-CEILING CIRCULAR GRILLE (EACH)
 Qi1160 Qi65S ST STEREO IN-CEILING SQUARE GRILLE (EACH)
 Qi1208 Qi80C IN-CEILING CIRCULAR GRILLE (PAIR)



Qi80C

6.5" IN-CEILING SPEAKER CIRCULAR GRILLE

The Qi80C is the most powerful of the Professional in-ceiling range from Q Acoustics including the beautiful Q Install magnetic grille design where the super slim bezel and narrow-mesh grille clips firmly into place. The major benefit of this grille design is that it makes a larger diameter in-ceiling speaker look much less obtrusive.



Q INSTALL PERFORMANCE IN-CEILING SPEAKERS



Nano Particle Technology

The advanced 'Nano particle' technology, incorporated into the cone material of the bass /midrange drive units of Q Install's 'Performance' series loudspeakers, delivers clear sonic advantages.

Nano particles are incredibly small, typically 100 nanometres in diameter, (which means 2000 of them, laid side by side, would be the same width as a human hair). Added to a conventional high quality cone material, such as polypropylene, they diffuse throughout the mixture to form a new nano-composite structure. The resultant cone boasts enhanced mechanical properties such as improved stiffness, reduced mass and an incredible 75% higher tensile strength. These technical advances deliver a faster transient response and reduced cone break up, leading to exceptionally low distortion, transparent and dynamic sound.

PERFORMANCE IN-CEILING SPEAKERS

Stock Code

- Qi1130 Qi65C PERFORMANCE IN-CEILING (EACH)
- Qi1140 Qi65SP PERFORMANCE IN CEILING (EACH)
- Qi1170 Qi65CPST PERFORMANCE STEREO (EACH)
- Qi1180 Qi65SPST PERFORMANCE STEREO (EACH)
- Qi1210 Qi80CP PERFORMANCE IN-CEILING (EACH)



Qi65CP

6.5" IN-CEILING STEREO SPEAKER
CIRCULAR GRILLE



Qi65CP ST

6.5" IN-CEILING SINGLE STEREO SPEAKER
CIRCULAR GRILLE



Qi65SP

6.5" IN-CEILING STEREO SPEAKER
SQUARE GRILLE



Qi65SP ST

6.5" IN-CEILING SINGLE STEREO SPEAKER
SQUARE GRILLE



Qi80CP

8" IN-CEILING STEREO SPEAKER
CIRCULAR GRILLE

Q INSTALL WETROOM AND WEATHERPROOF

Designed specifically to offer the latest low profile styling, with excellent long term reliability and performance in high humidity environments such as bathrooms



Ingress Protection
IPX4
Certified

The IP Code, International Protection Marking, IPX4 classifies and rates the degree of protection provided against the intrusion of moisture, such that water splashing against the enclosure from any direction shall have no harmful effect



Qi50CW

5.25" IN-CEILING WETROOM SPEAKER
CIRCULAR GRILLE



Qi65CW

6.5" IN-CEILING WEATHERPROOF
CIRCULAR GRILLE



Qi65CW ST

6.5" IN-CEILING WEATHERPROOF
CIRCULAR GRILLE

WETROOM AND WEATHERPROOF SPEAKERS

Stock Code

Qi1050 Qi50CW WETROOM IN-CEILING (PAIR)
Qi1190 Qi65CW WEATHERPROOF STEREO (PAIR)
Qi1200 Qi65CW ST WEATHERPROOF STEREO (EACH)



STAINLESS STEEL FIXINGS AND CORROSION RESISTANT ALUMINIUM GRILLES ARE UTILISED TOGETHER WITH FULLY SEALED DRIVE UNITS TO ENSURE NO WATER INGRESS.

PERFORMANCE IN-WALL SPEAKERS

The new Q Install in-wall series offers an exhilarating range of speakers designed for stereo and home theatre applications demanding exceptional performance from loudspeakers that meet the needs of clients requiring stylish low profile aesthetics.



Qi65RP

IN-WALL SPEAKER



Qi80RP

IN-WALL SPEAKER



Qi LCR 65RP

IN-WALL HOME CINEMA SPEAKER

All Performance in-wall models feature Q Install's superior Nano Particle mass damped polypropylene low frequency drive units with high powered coil and magnet assemblies for low distortion and high transient power capability. Full range speakers combine swivel silk dome mesh protected tweeters for fine system tuning together with additional high frequency level adjustment. All units feature low profile magnetic grilles for ease of installation, with optimised hole geometries for their frequency range. High order crossovers are used to ensure a smooth frequency transition on 2 and 3 way units, particular care has been taken to ensure that speech remains clear at all times via attention to the mid-range frequency response and reduction of all sources of colouration. Installation is made particularly flexible by ensuring that all units require the minimum of installation depth, the maximum rear depth required is just 99mm for the Qi Sub 80SP.

Installers may specify from a range consisting of an 8" and 6.5" two way full range units and a D'Appolito array LCR which is also ideal for use as a centre channel. A passive 8" sub is also offered to complement the full range units providing additional bass extension when used with an appropriate A/V receiver and power amplifier.



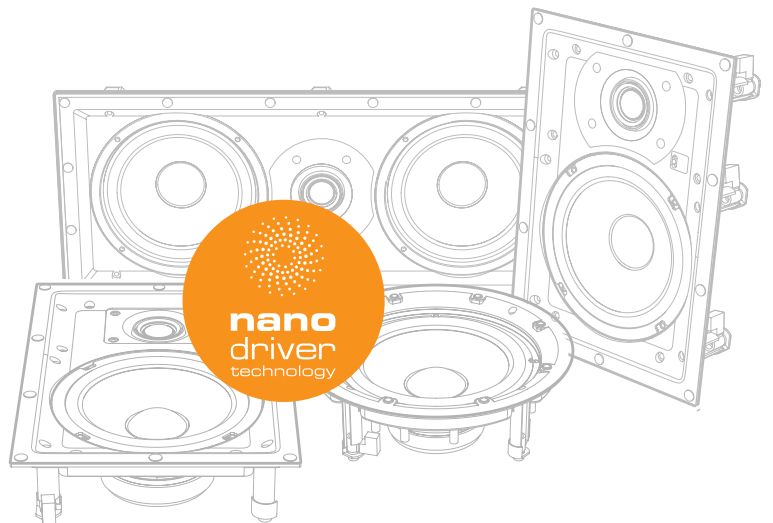
Qi SUB 80SP

IN-WALL HOME CINEMA SUBWOOFER

IN-WALL SPEAKERS

Stock Code

Qi2110	Qi 65RP PERFORMANCE IN-WALL SPEAKER
Qi2210	Qi 80RP PERFORMANCE IN-WALL SPEAKER
Qi2150	Qi LCR65RP PERFORMANCE IN-WALL SPEAKER
Qi2250	Qi SUB 80SP PERFORMANCE IN-WALL SUBWOOFER



INDOOR / OUTDOOR SPEAKERS: ON-WALL AND ON-GROUND

Be entertained in your conservatory or garden all year round with Q Install's dedicated, high performance weatherproof outdoor speakers.



Qi45EW

**ON-WALL WEATHERPROOF
INDOOR/OUTDOOR SPEAKER**

The Qi45 is an attractive and compact wall mounted, two-way speaker system, ideally suited for both indoor and outdoor environments. Featuring a tough UV resistant ABS enclosure and aluminium speaker grille, the Qi45 is designed to provide many years of trouble free service whatever the weather. Its diminutive dimensions and versatile mounting bracket make it both easy to install and the perfect solution for providing music in many applications; including outdoor dining and restaurant areas as well as indoor public spaces and conference facilities.



Qi65EW

**ON-WALL WEATHERPROOF
INDOOR/OUTDOOR SPEAKER**

Q Acoustics engineers have carefully crafted the Qi 65's audio performance to deliver an exceptional combination of clarity and focused power. Using a rigid polypropylene driver cone, high quality crossover network and bass reflex enclosure, they deliver results that comfortably exceed expectations.



Qi65LW

**ON-GROUND WEATHERPROOF
GARDEN ROCK SPEAKER**

The Qi65 is the perfect speaker for those who want to create music in a landscaped environment. Finished in a granite effect texture and incorporating a wide range 6.5" woofer and 1" tweeter, the Qi 65 visually blends into its environment when positioned within outdoor areas such as bordered patios or alpine gardens. Its rugged glass reinforced polymer cabinet construction and weatherproof cable termination allow the Qi 65 to be located at ground level, making it easy to locate and install with confidence.

Q Acoustics have engineered a low resonance cabinet and optimised the driver characteristics to ensure the Qi 65 delivers a full and clear sound even at high volumes. This makes it ideal for high quality outdoor music reproduction, announcements or even atmospheric birdsong!

OUTDOOR WEATHERPROOF SPEAKERS

Stock Code

Qi3150	Qi45EW ON-WALL WEATHERPROOF WHITE (EACH)
Qi3130	Qi45EW ON-WALL WEATHERPROOF BLACK (EACH)
Qi3190i	Qi65EW ON-WALL WEATHERPROOF WHITE (EACH)
Qi3170	Qi65EW ON-WALL WEATHERPROOF BLACK (EACH)
Qi3210	Qi65LW ON-GROUND WEATHERPROOF (EACH)



3000 Series



SPECIFICATIONS	3010	3020	3050	3090C
Dimensions H/D/W mm:	235 x 200 x 150	260 x 226 x 170	1000 x 298 x 200	150 x 200 x 430
Enclosure type:	2-way reflex	2-way reflex	2-way reflex	2-way reflex
Bass Unit:	100mm	125mm	2 x 165mm	2 x 100mm
Treble Unit:	25mm	25mm	25mm	25mm
Frequency Response:	68Hz - 22kHz	64Hz - 22kHz	44Hz - 22kHz	75Hz - 22kHz
Nominal Impedance:	6ohm	6ohm	6ohm	6ohm
Sensitivity:	86dB	88dB	92dB	89dB
Recommended Power:	15 - 75w	25 - 75w	25 - 100w	25 - 100w
Crossover Frequency:	2.8kHz	2.9kHz	2.6kHz	2.7kHz
Weight:	3.6kg	4.6kg	17.8kg	6kg
Sold in:	Pairs	Pairs	Pairs	Singly
Warranty:	5 Years	5 Years	5 Years	5 Years
Finishes Available:	Gloss Black Gloss White Graphite Walnut Leather Effect	Gloss Black Gloss White Graphite Walnut Leather Effect	Gloss Black Gloss White Graphite Walnut Leather Effect	Gloss Black Gloss White Graphite Walnut Leather Effect



SPECIFICATIONS	3070S	3000ST	3000WB	Glass Wall Supports
Dimensions H/D/W mm:	425 x 535 x 200	586 x 300 x 240		
Enclosure type:	Ported			
Bass Unit:	2 x 170mm			
Amplified Power:	140w rms			
Crossover Frequency:	50Hz - 150Hz (var)			
Weight:	13.6kg			
Sold in:	Single			
Warranty:	2 Years	5 Years	5 Years	5 Years
Finishes Available:	Gloss Black Gloss White Graphite Walnut Leather Effect	Black White	Black	Black

Concept Series



SPECIFICATIONS	Concept 20	Concept 20 Stand	Concept 40	Concept Centre
Dimensions H/D/W mm:	265 x 282 x 170	655 x 386 x 240	972 x 288 x 170	150 x 198 x 430
Enclosure type:	2-way reflex		2-way reflex (double woofer)	2-way reflex
Bass Unit:	125mm		2x125m	2x100m
Treble Unit:	25mm		25mm	25mm
Frequency Response:	64Hz - 22kHz		53Hz - 22kHz	75Hz - 22kHz
Nominal Impedance:	6ohm		8ohm	6ohm
Minimum Impedance:	4ohm		4ohm	4ohm
Sensitivity:	86dB		90dB	88dB
Recommended Power:	25 - 75w		25 - 150w	25 - 75w
Crossover Frequency:	2.9kHz		2.3kHz	2.9kHz
Weight:	12kg	12kg	18.5kg	6.9kg
Sold in:	Pairs	Pairs	Pairs	Single
Warranty:	5 Years	5 Years	5 Years	5 Years
Finishes Available:	Lacquered Black Gloss Lacquered White Gloss	Lacquered Black Gloss Lacquered White Gloss	Lacquered Black Gloss Lacquered White Gloss	Lacquered Black Gloss Lacquered White Gloss

7000i Series



SPECIFICATIONS	7000LRi	7000Ci	7070Si	7000i ST
Dimensions H/D/W mm:	240 x 160 x 100	116 x 160 x 207	320 x 198 x 460	Base: 320mm Height: 780mm
Enclosure Type:	2-way sealed enclosure	2-way sealed enclosure	Infinite Baffle	
Enclosure Material:	Aluminium	Aluminium	MDF	
LF Units (Neodymium):	2 x 3" Long Throw	2 x 3" Long Throw	8" High-Excursion Driver	
HF Unit (Neodymium):	1" Ring Radiator	1" Ring Radiator		
Power Handling:	15 - 100w	15 - 100w	150w Class D	
Sensitivity (Free Space):	85 dB @ 2.83V	85 dB @ 2.83V		
Impedance:	6 Ohm	6 Ohm		
Frequency:	95Hz - 20KHz	95Hz - 20KHz	35Hz - 200Hz	
Crossover Frequency:			50Hz - 150Hz (var)	
Weight:	1.6kg	1.6kg	13.8kg	2.6kg
Sold in:	Pairs	Singly	Singly	Pairs
Warranty:	5 Years	5 Years	2 Years	
Finishes Available:	Matte Black Matte White	Matte Black Matte White	Matte Black Matte White	Matte Black Matte White

Q Install Speakers

6.5" IN-CEILING SPEAKERS

PERFORMANCE 6.5" IN-CEILING SPEAKERS

SPEAKER TYPE



6.5" speakers
supplied in pairs



6.5" single stereo speaker
supplied singly



6.5" Performance speaker
supplied pairs



6.5" Performance single stereo
speaker supplied singly

GRILLE OPTIONS, MODEL NUMBER AND STOCK CODE



Model Number: Qi65C
Supplied with round grilles
Stock Code: Qi1110



Model Number: Qi65C St
Supplied with round grille
Stock Code: Qi1150



Model Number: Qi65CP
Supplied with round grilles
Stock Code: Qi1130



Model Number: Qi65CP St
Supplied with round grille
Stock Code: Qi1170



Model Number: Qi65S
Supplied with square grilles
Stock Code: Qi1120



Model Number: Qi65S St
Supplied with square grille
Stock Code: Qi1160



Model Number: Qi65SP
Supplied with square grilles
Stock Code: Qi1140



Model Number: Qi65SP St
Supplied with square grille
Stock Code: Qi1180

SPECIFICATIONS

Tweeter / Tweeter diameter:	Swivel / 0.75" (19mm)	Fixed / 2 x 0.75" (19mm)	Swivel / 1" (25mm)	Fixed / 2 x 1" (25mm)
Woofers diameter:	6.5"	6.5"	6.5"	6.5"
Power handling (program):	15-60W	15-60W	15-80W	15-80W
Impedance (nominal) ohms:	8	8	8	8
Sensitivity dB spl (2.83V,1m):	89	86	90 (switchable HF)	87 (switchable HF)
Response (Low freq) -3 dB:	75Hz	75Hz	70Hz	70Hz
Max rear depth:	79mm	84mm	79mm	84mm
Size: Round/Square grilles:	232mm dia / 232mm x 232mm	232mm dia / 232mm x 232mm	232mm dia / 232mm x 232mm	232mm dia / 232mm x 232mm
Cutout (nominal):	203mm	203mm	203mm	203mm
Warranty:	5 years	5 years	5 years	5 years

PERFORMANCE 8"
IN-CEILING SPEAKERS

WEATHERPROOF 6.5" IN-CEILING SPEAKERS



8" Performance single stereo speaker supplied singly



5.25" Wetroom speaker supplied in pairs



6.5" Weatherproof speaker supplied in pairs



6.5" Weatherproof single stereo speaker supplied singly



Model Number: Qi80CP
Supplied with round grille
Stock Code: Qi1210

N/A



Model Number: Qi50CW
Supplied with round grilles
Stock Code: Qi1050

N/A



Model Number: Qi65CW
Supplied with round grilles
Stock Code: Qi1190

N/A



Model Number: Qi65CW St
Supplied with round grille
Stock Code: Qi1200

N/A

Swivel / 2 x 1" (25mm)	Swivel / 2 x 0.75" (19mm)	Swivel / 1" (25mm)	Fixed / 2 x 0.5" (13mm)
8"	5.25"	6.5"	6.5"
15-80W	15-60W	15-60W	15-60W
8	8	8	8
88 (switchable HF)	87	87 (switchable HF)	85 (switchable HF)
55Hz	75Hz	65Hz	65Hz
97mm	79mm	84mm	84mm
281mm dia / 232mm x 232mm	204mm dia	230mm dia	230mm dia
248mm	182mm	197mm	197mm
5 years	5 years	5 years	5 years

Q Install Speakers

SPEAKER TYPE IN-WALL SPEAKERS



6.5" speakers
supplied singly

Model Number: Qi 65RP
Supplied with
rectangular grille
Stock Code: Qi2110



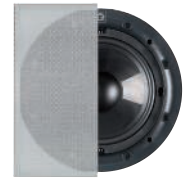
8" stereo speaker
supplied singly

Model Number: Qi 80RP
Supplied with
rectangular grille
Stock Code: Qi2210



6.5" LCR speaker
supplied singly

Model Number: QiLCR 65RP
Supplied with
rectangular grille
Stock Code: Qi2150



8" subwoofer speaker
supplied singly

Model Number: QiSUB 80SP
Supplied with square grille
Stock Code: Qi2250

SPECIFICATIONS

Tweeter / Tweeter diameter:	Swivel / 1" (25mm)	Swivel / 1" (25mm)	Swivel / 1" (25mm)	n/a
Woofer diameter:	6.5"	8"	6.5" x 2	8.0"
Power handling (program):	15-75W	15-100W	15-100W	15-100W
Impedance (nominal) ohms:	8	8	8	8
Sensitivity dB spl (2.83V,1m):	85 (switchable HF)	88 (switchable HF)	87 (switchable HF)	88 (100Hz)
Response (Low freq) -3 dB:	65Hz	60Hz	65Hz	50Hz
Max rear depth: (mm)	79	95	85	99
Size: (mm)	306 x 219	365 x 263	511 x 221	287 x 287
Cutout (nominal): (mm)	275 x 187	335 x 233	483 x 193	248
Warranty:	5 years	5 years	5 years	5 years

SPEAKER TYPE ON-GROUND WEATHERPROOF ON-WALL WEATHERPROOF BACKGROUND SPEAKER



Model Number: Qi65LW
Stock Code: Qi3210



Model Number: Qi45EW
Stock Code:
Black Qi3130
White Qi3150



Model Number: Qi65EW
Stock Code:
Black Qi3170
White Qi3190



Model Number: Qi65CB
Stock Code: Qi1105
(pack of 10)

SPECIFICATIONS

Tweeter / Tweeter diameter:	1" PEI dome	0.5" PEI dome	1" AL dome	2.2" (55mm) sympathetic radiator
Woofer diameter:	6.5" Polypropylene	4.5" Polypropylene	6.5" Polypropylene	6.5"
Power handling (program):	10-60W	10-50W	15-80W	10-50W
Impedance (nominal) ohms:	8ohm	8ohm	8ohm	8ohm
Sensitivity dB spl (2.83V, 1m):	88db/1W	86 dB/1W	87 dB/1W	93 dB
Response (Low freq) -3 dB:	70 Hz to 20 kHz	85 Hz to 20 kHz	80 Hz to 20 kHz	-3 dB 77Hz
Dimensions: H/D/W mm:	330 x 280 x 240	245 x 170 x 135 (inc. bracket)	325 x 225 x 180mm (inc. bracket)	
Diameter (mm)				232
Max rear depth (mm)				73
Cutout (nominal) (mm)				203
Warranty:	5 years	5 years	5 years	5 years
Finishes Available:	Rock Effect	Black / White	Black / White	

Audio Systems



SPECIFICATIONS	Media 4	Media 7000	Media BT3
Dimensions H/D/W mm:	90 x 142 x 1000 (height inc. feet = 105)	75 x 207 x 175 Q-AVA Please see 7000i specs	240 x 208 x 148 each (depth inc. terminals = 226)
Weight	4.9 Kg	1.2 Kg Q-AVA Please see 7000i specs	7.2 Kg total
Amplifiers			
Power output:	100W (2 x 25W + 50W)	Speakers: 2 x 50W into 4Ω from gold-plated binding posts Subwoofer: 0.9Vrms from RCA jack	100W (2 x 50w)
THD (at rated power):	<1.00%		<1.00%
Frequency response:	±0.5dB 20Hz to 20kHz		±0.5dB 20Hz to 20kHz
S/N ratio (A-Wtd):	-85dB		-85dB
MoviEQ™		Treble typically -4.3dB @10kHz Subwoofer output +4dB	
Connection Options			
	Bluetooth V4.0 including aptX®	Inputs	Bluetooth V4.0 including aptX®
	Analogue 3.5 mm stereo jack socket	2 x Toslink (up to 192kHz 24bit)	Analogue 3.5 mm stereo jack socket
	Analogue RCA phono sockets	1 x Analogue (3.5mm stereo jack)	Analogue RCA phono sockets
	Digital optical (Toslink)	1 x Bluetooth (with aptX and AAC)	Digital optical (Toslink)
	Subwoofer output (RCA)		Subwoofer output (RCA)
			Speaker terminals
Speakers			
HF drivers:	BMR 65mm x 65mm	Please see 7000i specs	Treble Unit: 25mm
LF drivers:	Twin coil 100mm x 150mm		Bass Unit: 100mm
Power consumption			
Standby:	<0.5 Watts	Separate power supply, 24V 5A	<0.5 Watts
No signal (idle):	14 Watts		14 Watts
Rear panel marked line ratings:	100~240V - 50~60Hz 100W		100~240V - 50~60Hz 100W
Bluetooth®			
Bluetooth specification:	V4.0 class 2 device	V4.0 class 2 device	V4.0 class 2 device
Latency:	6ms	6ms	6ms
Internal stereo CODEC:	16-bit	16-bit	16-bit
Stereo audio sample rate:	up to 48kHz	up to 48kHz	up to 48kHz
Music enhancements:	aptX®, SBC, MP3	aptX®, SBC, MP3, AAC	aptX®, SBC, MP3
Support for:	A2DP, 802.11 co-existence	A2DP, 802.11 co-existence	A2DP, 802.11 co-existence
Warranty:	2 Years	2 Year	2 Years
Finishes Available:	Black	Black White	Gloss Black Gloss White Gloss Red



BEAUTIFULLY ENGINEERED SOUND

armourHOME

Armour Home Electronics
Stortford Hall Industrial Park
Dunmow Road
Bishop's Stortford
Hertfordshire CM23 5GZ

Tel: +44 (0)1279 501111
Fax: +44 (0)1279 501080
www.armourhome.co.uk
info@armourhome.co.uk

www.QAcoustics.co.uk

AHE2004 // ZB0243

Our policy is one of continuous product improvement, we reserve the right to change the designs and specifications without notice. All information is given in good faith. The manufacturer accepts no responsibility for errors, omissions or incorrect assumptions. Armour Home Electronics 2016. E&OE.